




BaseVan Initial Inspection

Inspection details

Name of inspector	Franklyn T Bromfield
Date of inspection	12/02/2024
Signature	

Vehicle details

Vehicle registration	VU59CWO
Vehicle chassis no.	WDB9061532N428421
Miles (if in km, multiply by 0.62)	240455
Make	Mercedes
Model	Sprinter
Transmission	Automatic
Factory immobiliser installed	Yes
Speed limiter installed	Yes
Drive configuration	RWD
Gross vehicle weight	5200kg
Towing capacity	3000kg
Tow bar installed	No

Off side front

Age (month/year) Manufactured	21/22
Make, brand.	Michelin
Tyre size	205/75/R16
Pressure 1	
Pressure 2	
Wearing / Perishing (inner)	none
Wearing / Perishing (outer)	None
tread depth (mm)	9
General comments	virtually brand new



BaseVan Initial Inspection

Images of tyre



Near side front

Age (month/year) Manufactured	21/22
Make, brand.	Michelin
Tyre size	205/75/R16
Pressure 1	
Pressure 2	
Wearing / Perishing (inner)	none
Wearing / Perishing (outer)	None
tread depth (mm)	9
General comments	virtually brand new



BaseVan Initial Inspection

Images of tyre



near side rear

Age (month/year) Manufactured	08/22
Make, brand.	Michelin
Tyre size	205/75/R16
Pressure 1	
Pressure 2	
Wearing / Perishing (inner)	none
Wearing / Perishing (outer)	None
tread depth (mm)	8
General comments	fantastix



BaseVan Initial Inspection

Images of tyre



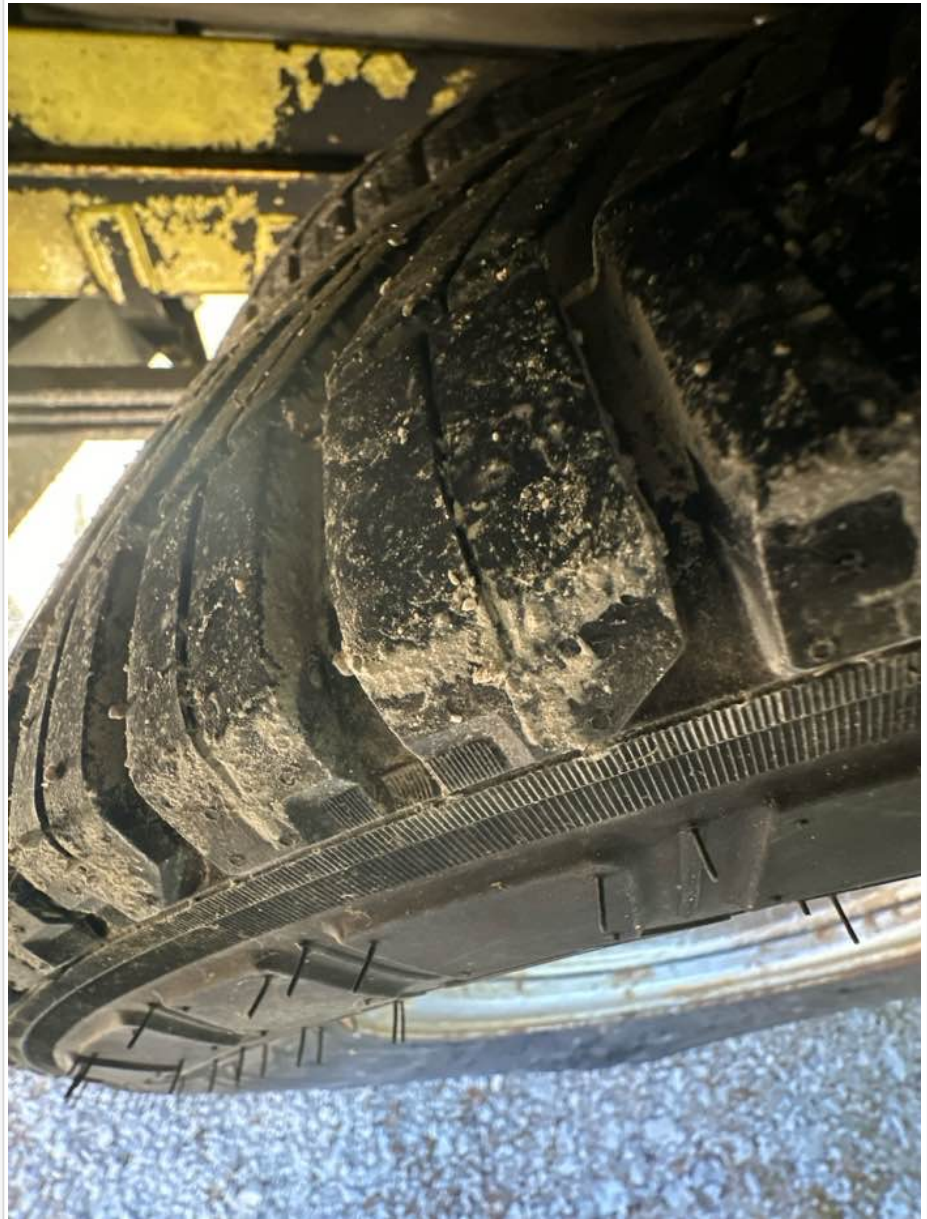
Off side rear

Age (month/year) Manufactured	08/22
Make, brand.	Michelin
Tyre size	205/75/R16
Pressure 1	
Pressure 2	
Wearing / Perishing (inner)	none
Wearing / Perishing (outer)	None
tread depth (mm)	7
General comments	new tyre



BaseVan Initial Inspection

Images of tyre

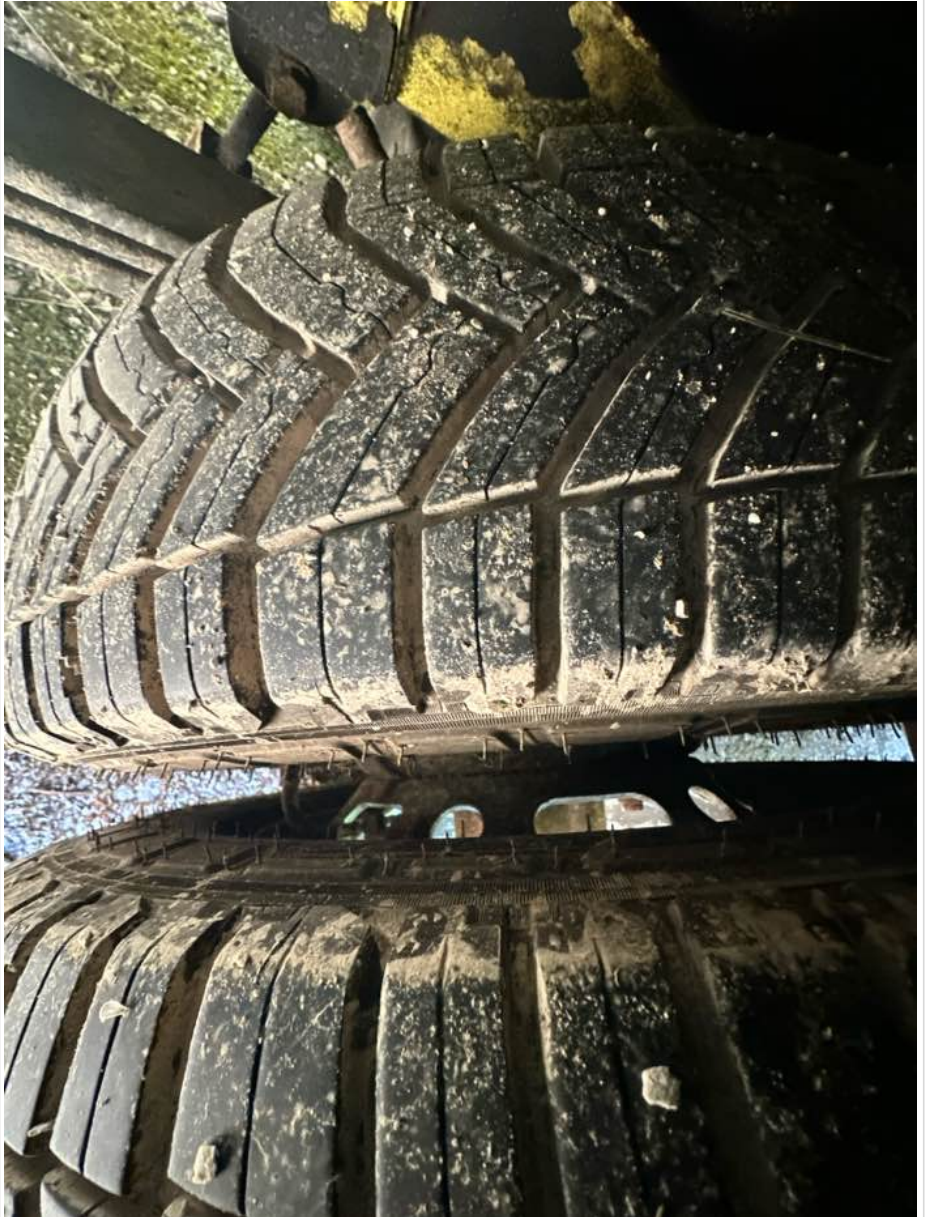


off side Inner (for twin wheel vans)

Is the vehicle a twin wheel axle? (if no don't fill out)	Yes
Age (month/year) Manufactured	08/22
Make, brand.	Michelin
Tyre size	205/75/R16
Pressure 1	
Pressure 2	
Wearing / Perishing (inner)	none
Wearing / Perishing (outer)	None



BaseVan Initial Inspection

tread depth (mm)	8
General comments	great tyre lots of life
Images of tyre	

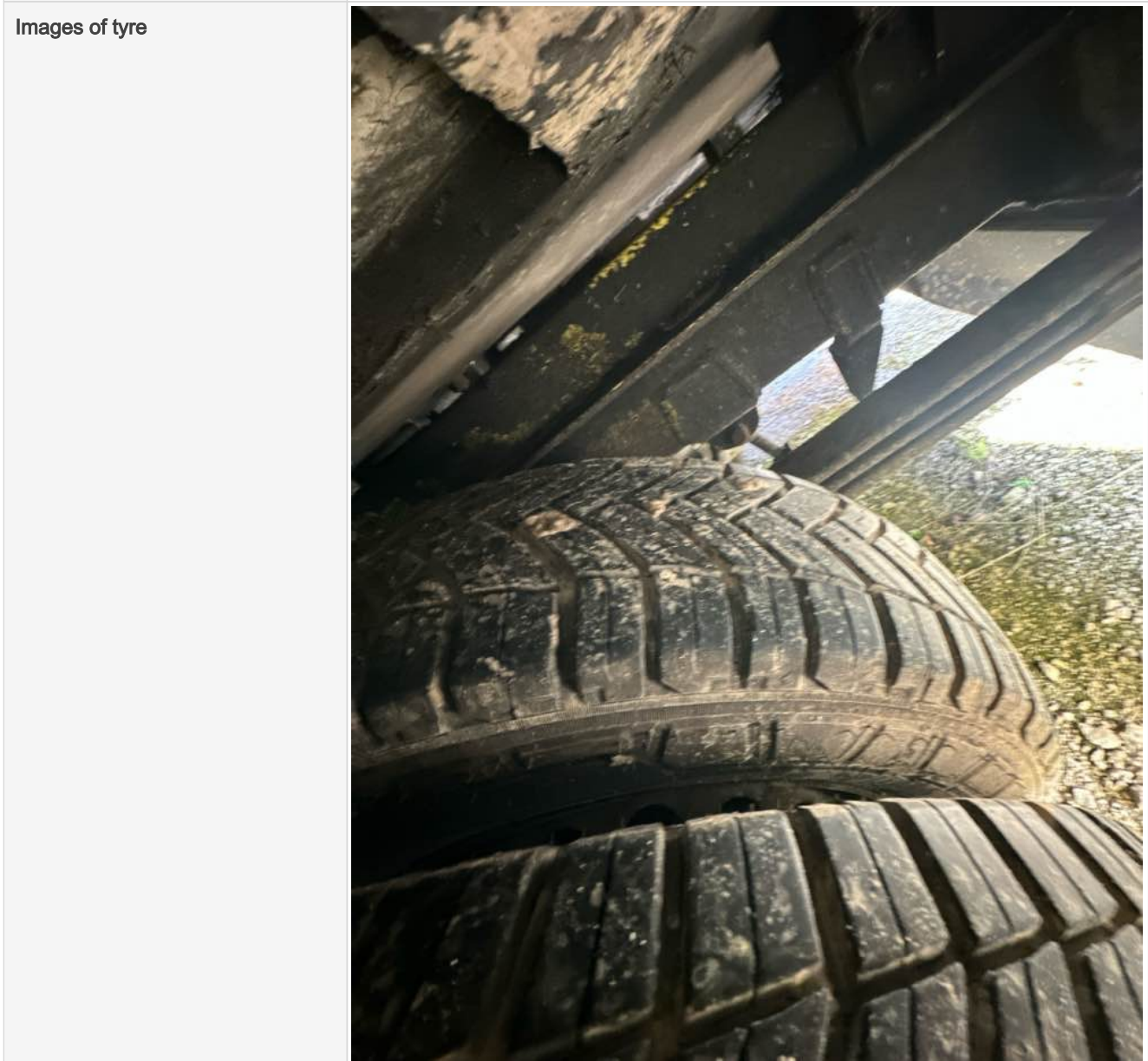
near side Inner (for twin wheel vans)

Is the vehicle a twin wheel axle? (if no don't fill out)	Yes
Age (month/year) Manufactured	08/22
Make, brand.	Michelin
Tyre size	205/75/R16
Pressure 1	
Pressure 2	



BaseVan Initial Inspection

Wearing / Perishing (inner)	none
Wearing / Perishing (outer)	None
tread depth (mm)	8
General comments	great tyre minimal wear



Spare wheel

Spare installed? (If no, don't fill out)	
Age (month/year) Manufactured	
Make, brand.	
Tyre size	



BaseVan Initial Inspection

Pressure 1	
Pressure 2	
Wearing / Perishing (inner)	
Wearing / Perishing (outer)	
tread depth (mm)	
General comments	
Images of tyre	

Vehicle locking

Factory central locking fitted?	Yes
Response from key fob?	Yes
Response from in-cab locking button?	Yes
Do all the doors lock from central locking function?	Some
Select the following doors that lock.	O/S Front, N/S Front
Method of locking	Fob
In conclusion can all the doors be locked in some way and thus the vehicle can be left unattended at night safely?	No



BaseVan Initial Inspection

How many keys present at time of inspection?



Comment

Rear doors on separate key

In cab checks

Number of seats (cab only)	Driver & 1 passenger
Cab heater check	Does not work
Comment on cab heater	all 4 fan settings inoperative
Electric windows present	Yes
Cab windows function check	Driver side function, Passenger side function
Air conditioning present	No
Charging socket present (cigarette lighter)	Yes



BaseVan Initial Inspection

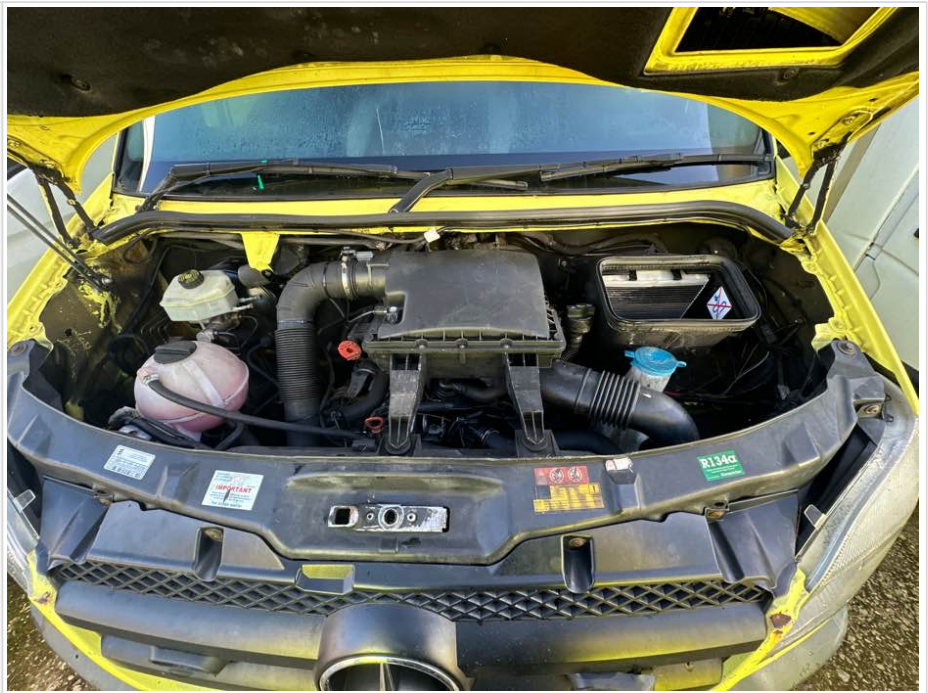
Function working?	Yes
Radio / Media system fitted?	Yes
Radio / media system check	Functions
Reverse camera present?	No
Reverse camera functioning?	N/A
Show any damage or missing items	

General mechanical checks

Fuel level	1/2 Full
Oil level	Full
Oil condition	Clean
Start up, chassis battery check	Started without jump pack
Start-up from cold	Instant
Exhaust smoke from cold	Normal
Output Voltage of Alternator test	14.1
Chain or Belt driven engine?	Chain
If belt any proof of change?	-
Coolant condition	Clean
Coolant level	Full
Anti-freeze temperature check	-16
Washer fluid	Full
Brake fluid	Full
Power steering fluid	Maximum
Dashboard warning light	EML present
OBD Scan results	



BaseVan Initial Inspection

<p>Engine bay photo</p>	
<p>Comment</p>	<p>mechanically well</p>