




BaseVan Initial Inspection

Inspection details

| | |
|--------------------|--|
| Name of inspector | Franklyn T Bromfield |
| Date of inspection | 08/01/2024 |
| Signature |  |

Vehicle details

| | |
|------------------------------------|-------------------|
| Vehicle registration | GN11KKE |
| Vehicle chassis no. | ZFA25000001876839 |
| Miles (if in km, multiply by 0.62) | 65909 |
| Make | FIAT |
| Model | DUCATO |
| Transmission | Manual, 6 speed |
| Factory immobiliser installed | Yes |
| Speed limiter installed | Yes |
| Drive configuration | FWD |
| Gross vehicle weight | 4600kg |
| Towing capacity | - |
| Tow bar installed | No |

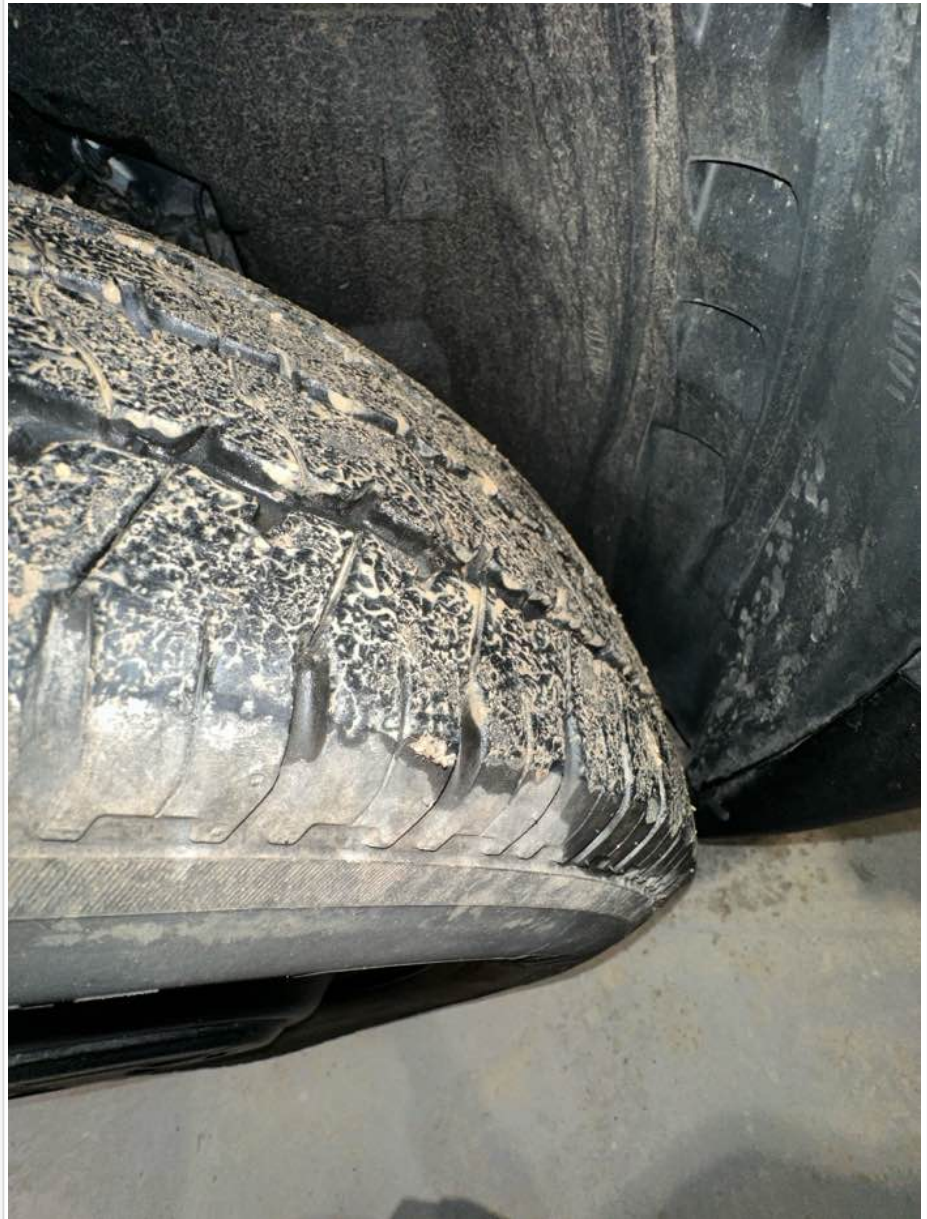
Off side front

| | |
|-------------------------------|--------------------------------------|
| Age (month/year) Manufactured | 19/21 |
| Make, brand. | GT Radial |
| Tyre size | 225/75/R16 |
| Pressure 1 | |
| Pressure 2 | |
| Wearing / Perishing (inner) | none |
| Wearing / Perishing (outer) | None |
| tread depth (mm) | 7 |
| General comments | straight tyre, minimal wear and tear |



BaseVan Initial Inspection

Images of tyre



Near side front

| | |
|-------------------------------|---|
| Age (month/year) Manufactured | 19/21 |
| Make, brand. | GT Radial |
| Tyre size | 225/75/R16 |
| Pressure 1 | |
| Pressure 2 | |
| Wearing / Perishing (inner) | none |
| Wearing / Perishing (outer) | None |
| tread depth (mm) | 7 |
| General comments | straight tyre, minimal wear and tyre same as other side |



BaseVan Initial Inspection

Images of tyre



near side rear

| | |
|-------------------------------|---|
| Age (month/year) Manufactured | 06/18 |
| Make, brand. | Michelin |
| Tyre size | 225/75/R16 |
| Pressure 1 | |
| Pressure 2 | |
| Wearing / Perishing (inner) | none |
| Wearing / Perishing (outer) | None |
| tread depth (mm) | 8 |
| General comments | very good tyre, some kerb rashing but causing no problems |



BaseVan Initial Inspection

Images of tyre



Off side rear

| | |
|-------------------------------|-----------------------------|
| Age (month/year) Manufactured | 32/21 |
| Make, brand. | Budget |
| Tyre size | 225/75/R16 |
| Pressure 1 | |
| Pressure 2 | |
| Wearing / Perishing (inner) | none |
| Wearing / Perishing (outer) | None |
| tread depth (mm) | 8 |
| General comments | great tyre, no wear or tear |



BaseVan Initial Inspection

Images of tyre



off side Inner (for twin wheel vans)

| | |
|--|----|
| Is the vehicle a twin wheel axle? (if no don't fill out) | No |
| Age (month/year) Manufactured | |
| Make, brand. | |
| Tyre size | |
| Pressure 1 | |
| Pressure 2 | |
| Wearing / Perishing (inner) | |
| Wearing / Perishing (outer) | |



BaseVan Initial Inspection

| | |
|------------------|--|
| tread depth (mm) | |
| General comments | |
| Images of tyre | |

near side Inner (for twin wheel vans)

| | |
|--|----|
| Is the vehicle a twin wheel axle? (if no don't fill out) | No |
| Age (month/year) Manufactured | |
| Make, brand. | |
| Tyre size | |
| Pressure 1 | |
| Pressure 2 | |
| Wearing / Perishing (inner) | |
| Wearing / Perishing (outer) | |
| tread depth (mm) | |
| General comments | |
| Images of tyre | |

Spare wheel


| | |
|--|----|
| Spare installed? (If no, don't fill out) | No |
| Age (month/year) Manufactured | |
| Make, brand. | |
| Tyre size | |
| Pressure 1 | |
| Pressure 2 | |
| Wearing / Perishing (inner) | |
| Wearing / Perishing (outer) | |
| tread depth (mm) | |
| General comments | |
| Images of tyre | |

Vehicle locking

| | |
|--|-----|
| Factory central locking fitted? | Yes |
| Response from key fob? | |
| Response from in-cab locking button? | Yes |
| Do all the doors lock from central locking function? | All |



BaseVan Initial Inspection

| | |
|--|---|
| Select the following doors that lock. | N/S Front, O/S Front, N/S Rear, O/S Rear, N/S SL |
| Method of locking | Fob |
| In conclusion can all the doors be locked in some way and thus the vehicle can be left unattended at night safely? | |
| How many keys present at time of inspection? |  |
| Comment | works as should |

In cab checks

| | |
|----------------------------|-----------------------|
| Number of seats (cab only) | Driver & 2 passenger |
| Cab heater check | Works on all settings |
| Comment on cab heater | great |



BaseVan Initial Inspection


| | |
|---|---|
| Electric windows present | Yes |
| Cab windows function check | Driver side function, Passenger side function |
| Air conditioning present | No |
| Charging socket present (cigarette lighter) | Yes |
| Function working? | Yes |
| Radio / Media system fitted? | Yes |
| Radio / media system check | Not functioning |
| Reverse camera present? | No |
| Reverse camera functioning? | N/A |
| Show any damage or missing items | |

General mechanical checks

| | |
|-----------------------------------|---------------------------|
| Fuel level | 1/2 Full |
| Oil level | Full |
| Oil conditon | Clean |
| Start up, chassis battery check | Started without jump pack |
| Start-up from cold | 2 seconds |
| Exhaust smoke from cold | Normal |
| Output Voltage of Alternator test | 13.8 |
| Chain or Belt driven engine? | Chain |
| If belt any proof of change? | - |
| Coolant condition | Clean |
| Coolant level | Full |
| Anti-freeze temperature check | -15 |
| Washer fluid | Full |
| Brake fluid | Full |
| Power steering fluid | Maximum |
| Dashboard warning light | No warning lights |
| OBD Scan results | |



BaseVan Initial Inspection

| | |
|-------------------------|---|
| <p>Engine bay photo</p> |  |
| <p>Comment</p> | |