




## BaseVan Initial Inspection

### Inspection details

Name of inspector	Franklyn T Bromfield
Date of inspection	21/12/2023
Signature	

### Vehicle details

Vehicle registration	YT62MXJ
Vehicle chassis no.	WFOXXXTTFXDC01300
Miles (if in km, multiply by 0.62)	102220
Make	Ford
Model	Transit
Transmission	Manual, 6 speed
Factory immobiliser installed	No
Speed limiter installed	No
Drive configuration	RWD
Gross vehicle weight	<3500kg
Towing capacity	675kg
Tow bar installed	No

### Off side front

Age (month/year) Manufactured	15/22
Make, brand.	Michelin
Tyre size	Not here (see comment)
Pressure 1	
Pressure 2	
Wearing / Perishing (inner)	none
Wearing / Perishing (outer)	None
tread depth (mm)	8
General comments	195/45/15



## BaseVan Initial Inspection

Images of tyre



### Near side front

Age (month/year) Manufactured	16/22
Make, brand.	Michelin
Tyre size	Not here (see comment)
Pressure 1	
Pressure 2	
Wearing / Perishing (inner)	none
Wearing / Perishing (outer)	None
tread depth (mm)	7
General comments	good tyre



## BaseVan Initial Inspection

Images of tyre



### near side rear

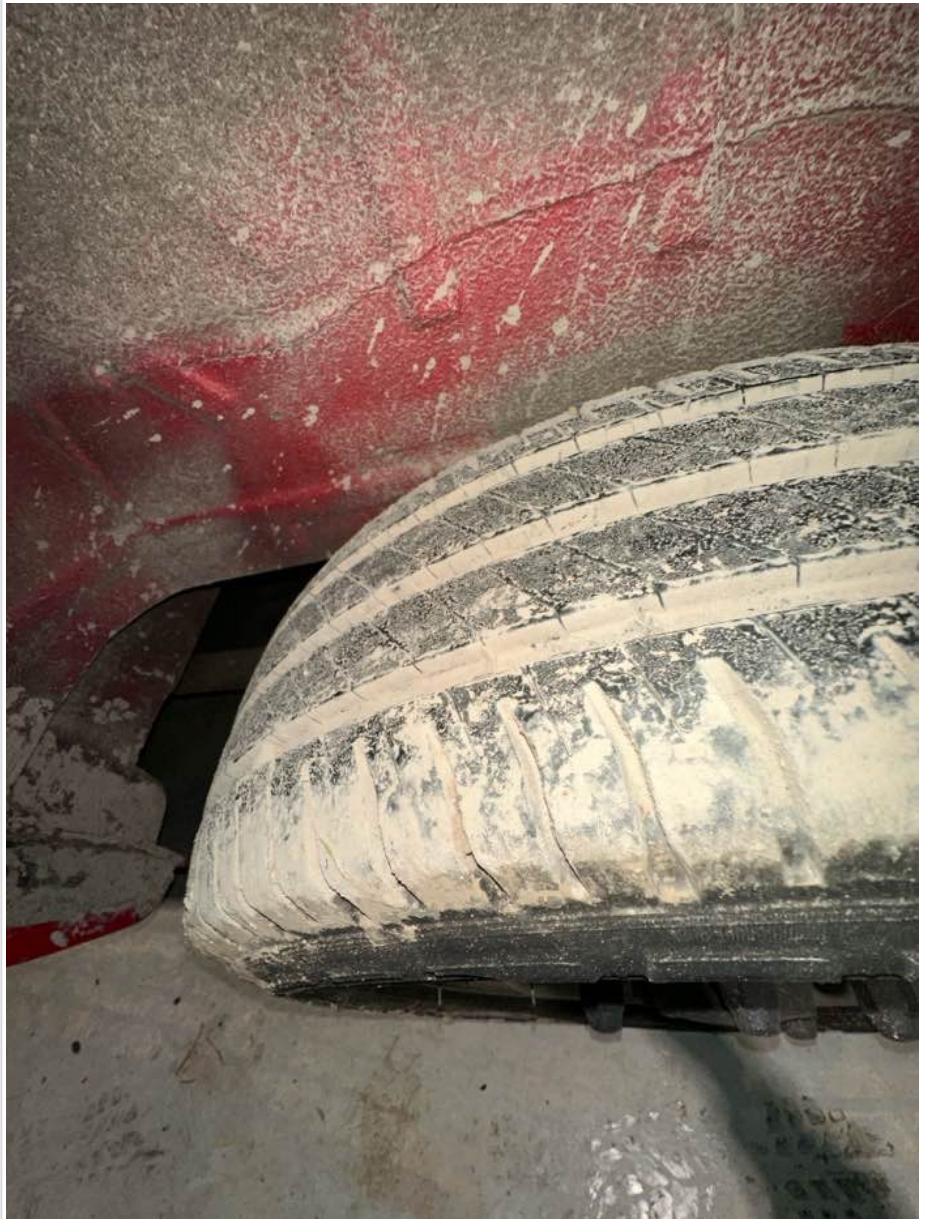
Age (month/year) Manufactured	15/22
Make, brand.	Michelin
Tyre size	Not here (see comment)
Pressure 1	
Pressure 2	
Wearing / Perishing (inner)	none
Wearing / Perishing (outer)	None
tread depth (mm)	8
General comments	good tyre





## BaseVan Initial Inspection

Images of tyre



### Off side rear

Age (month/year) Manufactured	15/22
Make, brand.	Budget
Tyre size	Not here (see comment)
Pressure 1	
Pressure 2	
Wearing / Perishing (inner)	none
Wearing / Perishing (outer)	None
tread depth (mm)	6
General comments	195/45/15



## BaseVan Initial Inspection

Images of tyre	
----------------	--

### off side Inner (for twin wheel vans)

Is the vehicle a twin wheel axle? (if no don't fill out)	
Age (month/year) Manufactured	
Make, brand.	
Tyre size	
Pressure 1	
Pressure 2	
Wearing / Perishing (inner)	
Wearing / Perishing (outer)	
tread depth (mm)	
General comments	
Images of tyre	

### near side Inner (for twin wheel vans)

Is the vehicle a twin wheel axle? (if no don't fill out)	
Age (month/year) Manufactured	
Make, brand.	
Tyre size	
Pressure 1	
Pressure 2	
Wearing / Perishing (inner)	
Wearing / Perishing (outer)	
tread depth (mm)	
General comments	
Images of tyre	

### Spare wheel

Spare installed? (If no, don't fill out)	
Age (month/year) Manufactured	
Make, brand.	
Tyre size	
Pressure 1	
Pressure 2	



## BaseVan Initial Inspection

Wearing / Perishing (inner)	
Wearing / Perishing (outer)	
tread depth (mm)	
General comments	
Images of tyre	

## Vehicle locking

Factory central locking fitted?	Yes
Response from key fob?	Yes
Response from in-cab locking button?	Yes
Do all the doors lock from central locking function?	All
Select the following doors that lock.	N/S Front, O/S Front, N/S SL, O/S SL, N/S Rear, O/S Rear
Method of locking	Fob
In conclusion can all the doors be locked in some way and thus the vehicle can be left unattended at night safely?	Yes
How many keys present at time of inspection?	
Comment	1 key, great van


## In cab checks

Number of seats (cab only)	Driver & 2 passenger
Cab heater check	Works on all settings
Comment on cab heater	works well, noisy when engaged
Electric windows present	Yes
Cab windows function check	Driver side function, Passenger side function
Air conditioning present	Yes
Charging socket present (cigarette lighter)	Yes
Function working?	Yes
Radio / Media system fitted?	Yes
Radio / media system check	Functions
Reverse camera present?	Yes
Reverse camera functioning?	Yes
Show any damage or missing items	

## General mechanical checks



## BaseVan Initial Inspection

Fuel level	1/2 Full
Oil level	Full
Oil conditon	Clean
Start up, chassis battery check	Started without jump pack
Start-up from cold	Instant
Exhaust smoke from cold	Normal
Output Voltage of Alternator test	14.4
Chain or Belt driven engine?	Chain
If belt any proof of change?	-
Coolant condition	Clean
Coolant level	Full
Anti-freeze temperature check	-12
Washer fluid	Low, And now topped up to correct level
Brake fluid	Full
Power steering fluid	Maximum
Dashboard warning light	No warning lights
OBD Scan results	
Engine bay photo	
Comment	1st gear temperamental