




## BaseVan Initial Inspection

### Inspection details

Name of inspector	Franklyn T Bromfield
Date of inspection	16/02/2024
Signature	

### Vehicle details

Vehicle registration	GN53ORV
Vehicle chassis no.	ZCFC509000D222228
Miles (if in km, multiply by 0.62)	63149
Make	Iveco
Model	Daily
Transmission	Manual, 6 speed
Factory immobiliser installed	Yes
Speed limiter installed	Yes
Drive configuration	RWD
Gross vehicle weight	5200kg
Towing capacity	3500kg
Tow bar installed	No

### Off side front

Age (month/year) Manufactured	33/20
Make, brand.	Cooper
Tyre size	195/75/R16
Pressure 1	
Pressure 2	
Wearing / Perishing (inner)	none
Wearing / Perishing (outer)	None
tread depth (mm)	8
General comments	mint tyre



## BaseVan Initial Inspection

Images of tyre



### Near side front

Age (month/year) Manufactured	33/20
Make, brand.	Cooper
Tyre size	195/75/R16
Pressure 1	
Pressure 2	
Wearing / Perishing (inner)	none
Wearing / Perishing (outer)	None
tread depth (mm)	8
General comments	great tyre



## BaseVan Initial Inspection

Images of tyre



### near side rear

Age (month/year) Manufactured	47/17
Make, brand.	Budget
Tyre size	195/75/R16
Pressure 1	
Pressure 2	
Wearing / Perishing (inner)	none
Wearing / Perishing (outer)	None
tread depth (mm)	7
General comments	great tyre





## BaseVan Initial Inspection

Images of tyre



### Off side rear

Age (month/year) Manufactured	48/20
Make, brand.	Budget
Tyre size	195/75/R16
Pressure 1	
Pressure 2	
Wearing / Perishing (inner)	none
Wearing / Perishing (outer)	None
tread depth (mm)	8
General comments	great tyre



## BaseVan Initial Inspection

Images of tyre




### off side Inner (for twin wheel vans)

Is the vehicle a twin wheel axle? (if no don't fill out)	Yes
Age (month/year) Manufactured	48/20
Make, brand.	Budget
Tyre size	195/75/R16
Pressure 1	
Pressure 2	
Wearing / Perishing (inner)	none
Wearing / Perishing (outer)	None





## BaseVan Initial Inspection

tread depth (mm)	8
General comments	great tyre
Images of tyre	

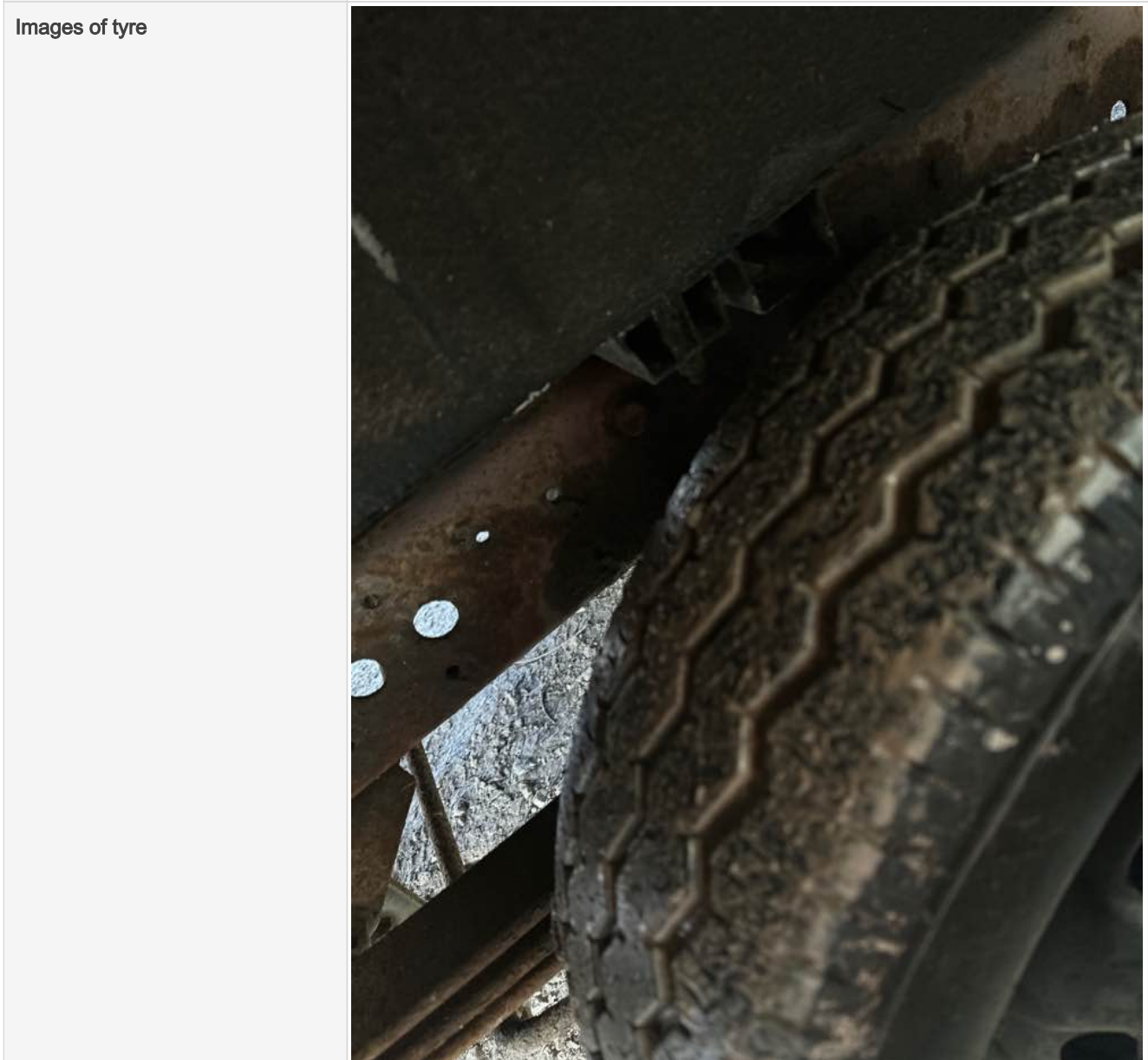
### near side Inner (for twin wheel vans)

Is the vehicle a twin wheel axle? (if no don't fill out)	Yes
Age (month/year) Manufactured	48/20
Make, brand.	Budget
Tyre size	195/75/R16
Pressure 1	
Pressure 2	



## BaseVan Initial Inspection

Wearing / Perishing (inner)	none
Wearing / Perishing (outer)	None
tread depth (mm)	8
General comments	Great tyre



## Spare wheel

Spare installed? (If no, don't fill out)	No
Age (month/year) Manufactured	
Make, brand.	
Tyre size	



## BaseVan Initial Inspection

Pressure 1	
Pressure 2	
Wearing / Perishing (inner)	
Wearing / Perishing (outer)	
tread depth (mm)	
General comments	
Images of tyre	

## Vehicle locking

Factory central locking fitted?	No
Response from key fob?	N/A
Response from in-cab locking button?	N/A
Do all the doors lock from central locking function?	None
Select the following doors that lock.	O/S Front, N/S Rear, O/S Rear
Method of locking	Key
In conclusion can all the doors be locked in some way and thus the vehicle can be left unattended at night safely?	No





## BaseVan Initial Inspection

How many keys present at time of inspection?



Comment

no way of locking electric side door

### In cab checks

Number of seats (cab only)	Driver only
Cab heater check	Works on all settings
Comment on cab heater	works nice
Electric windows present	No
Cab windows function check	Driver side function
Air conditioning present	No
Charging socket present (cigarette lighter)	Yes



## BaseVan Initial Inspection

Function working?	Yes
Radio / Media system fitted?	Yes
Radio / media system check	Functions
Reverse camera present?	No
Reverse camera functioning?	N/A
Show any damage or missing items	

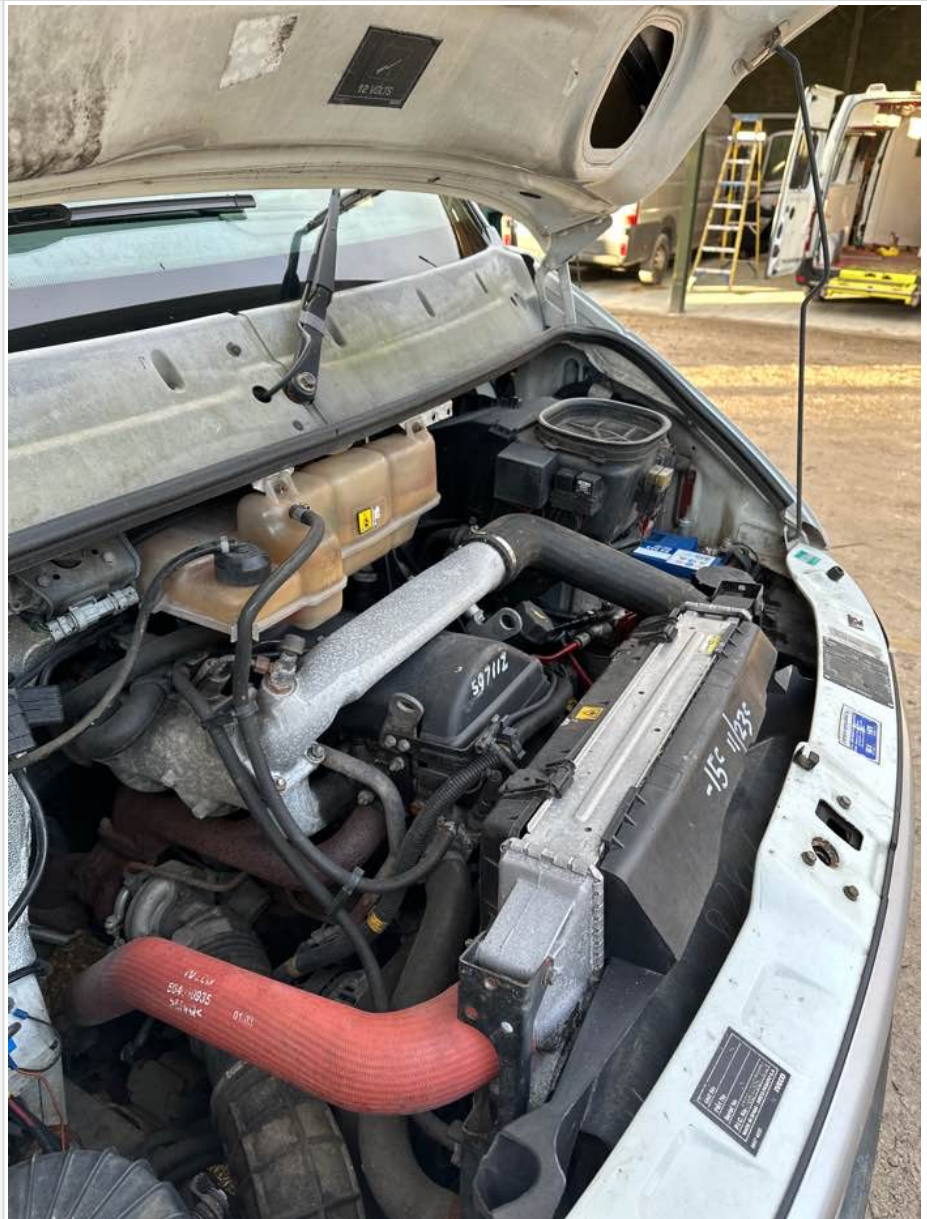
## General mechanical checks

Fuel level	1/2 Full
Oil level	Full
Oil condition	Clean
Start up, chassis battery check	Started without jump pack
Start-up from cold	Instant
Exhaust smoke from cold	Normal
Output Voltage of Alternator test	14.0
Chain or Belt driven engine?	Chain
If belt any proof of change?	-
Coolant condition	Clean
Coolant level	Full
Anti-freeze temperature check	-15
Washer fluid	Full
Brake fluid	Full
Power steering fluid	Maximum
Dashboard warning light	SRS / Airbag
OBD Scan results	



## BaseVan Initial Inspection

Engine bay photo



Comment

mechanically very well