




BaseVan Initial Inspection

Inspection details

Name of inspector	Franklyn T Bromfield
Date of inspection	04/03/2024
Signature	

Vehicle details

Vehicle registration	CN13BZY
Vehicle chassis no.	WOLMTFBFHCB035826
Miles (if in km, multiply by 0.62)	79917
Make	Vauxhall
Model	Movano
Transmission	Manual, 6 speed
Factory immobiliser installed	Yes
Speed limiter installed	No
Drive configuration	RWD
Gross vehicle weight	4600kg
Towing capacity	3000kg
Tow bar installed	Yes

Off side front

Age (month/year) Manufactured	23/21
Make, brand.	Good Year
Tyre size	195/75/R16
Pressure 1	
Pressure 2	
Wearing / Perishing (inner)	none
Wearing / Perishing (outer)	None
tread depth (mm)	8
General comments	barely used



BaseVan Initial Inspection

Images of tyre



Near side front

Age (month/year) Manufactured	01/21
Make, brand.	Good Year
Tyre size	195/75/R16
Pressure 1	
Pressure 2	
Wearing / Perishing (inner)	none
Wearing / Perishing (outer)	None
tread depth (mm)	8
General comments	barely used



BaseVan Initial Inspection

Images of tyre



near side rear

Age (month/year) Manufactured	01/21
Make, brand.	Good Year
Tyre size	195/75/R16
Pressure 1	
Pressure 2	
Wearing / Perishing (inner)	none
Wearing / Perishing (outer)	None
tread depth (mm)	7
General comments	barely used



BaseVan Initial Inspection

Images of tyre

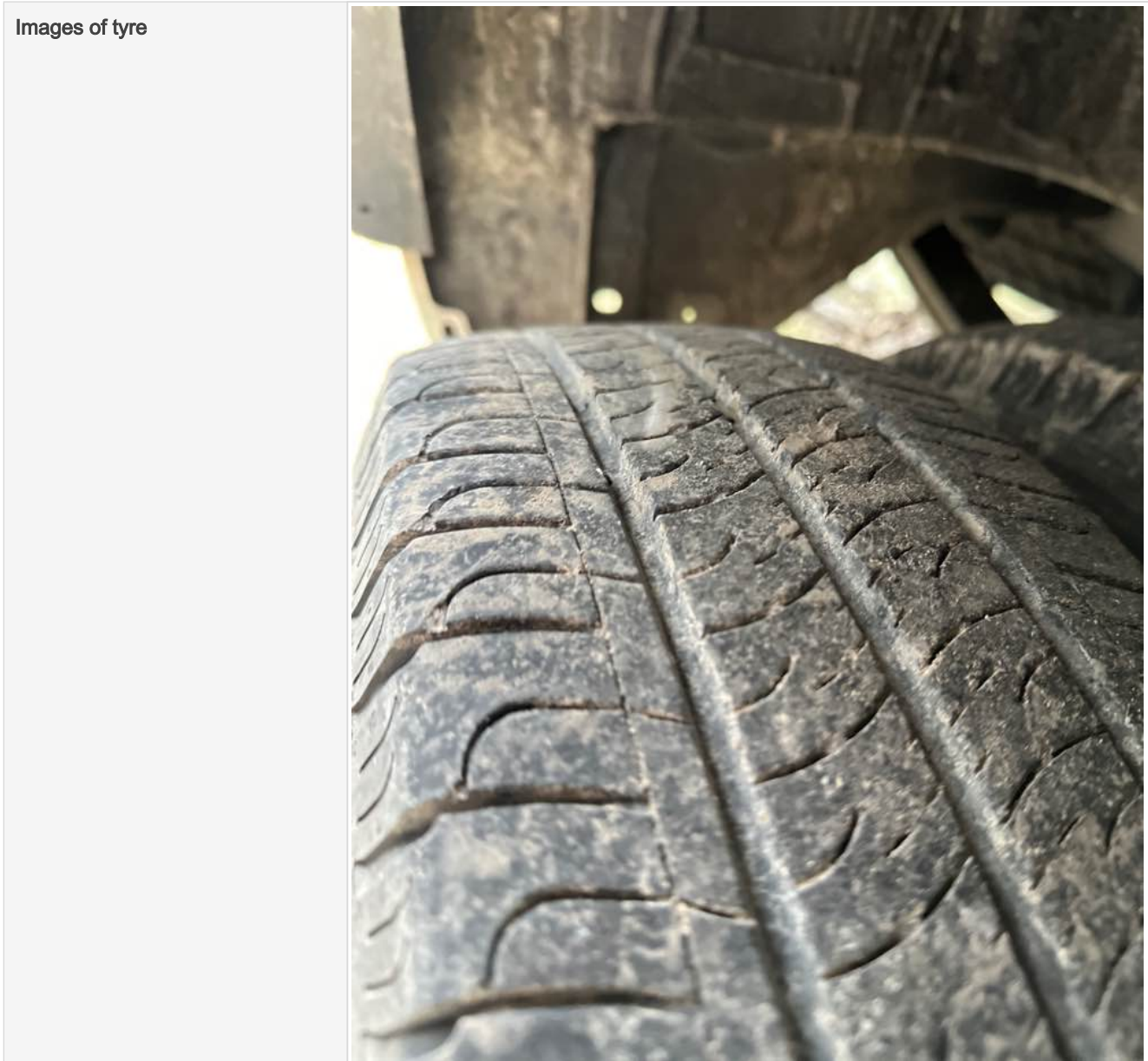


Off side rear

Age (month/year) Manufactured	51/20
Make, brand.	Good Year
Tyre size	195/75/R16
Pressure 1	
Pressure 2	
Wearing / Perishing (inner)	none
Wearing / Perishing (outer)	None
tread depth (mm)	6
General comments	barely used



BaseVan Initial Inspection

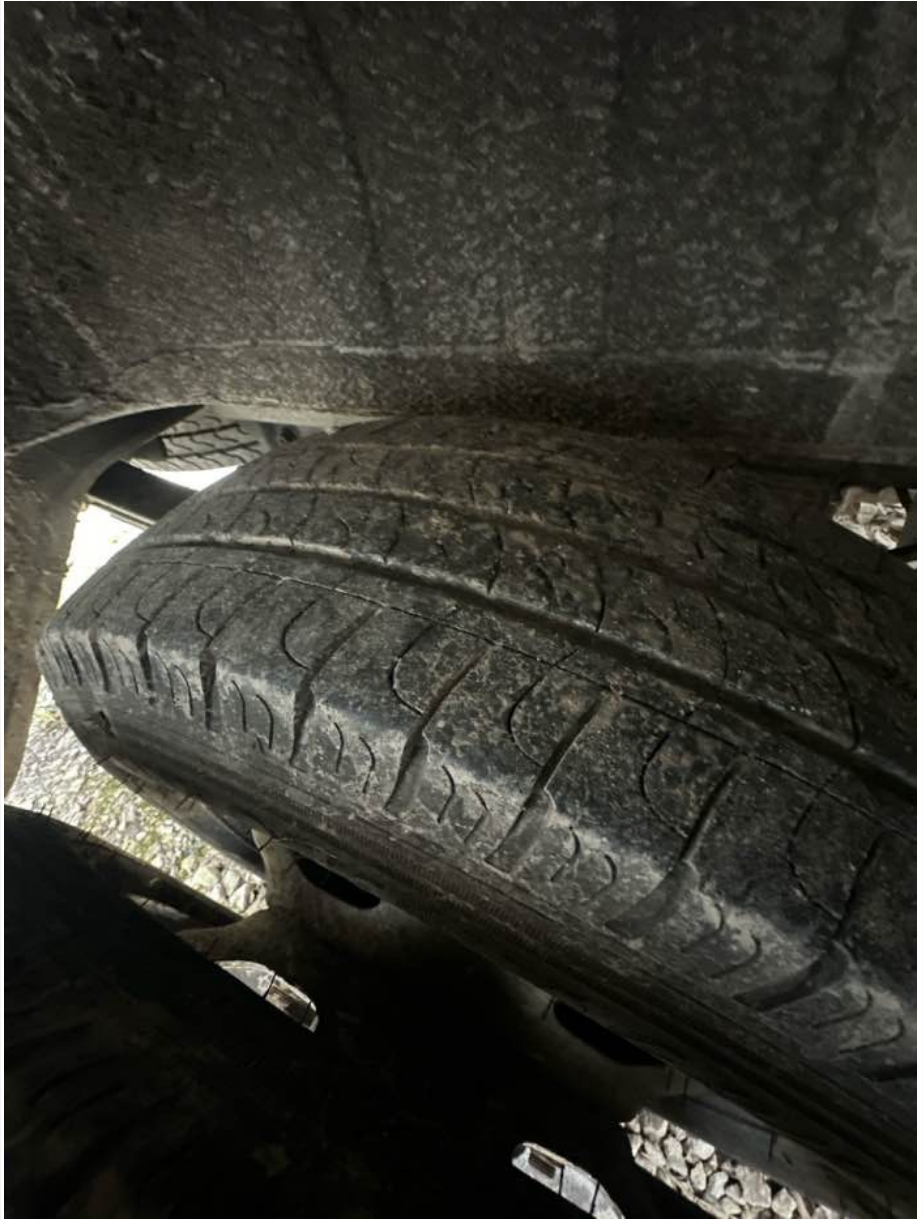


off side Inner (for twin wheel vans)

Is the vehicle a twin wheel axle? (if no don't fill out)	Yes
Age (month/year) Manufactured	02/21
Make, brand.	Good Year
Tyre size	195/75/R16
Pressure 1	
Pressure 2	
Wearing / Perishing (inner)	none
Wearing / Perishing (outer)	None



BaseVan Initial Inspection

tread depth (mm)	6
General comments	good tyre
Images of tyre	

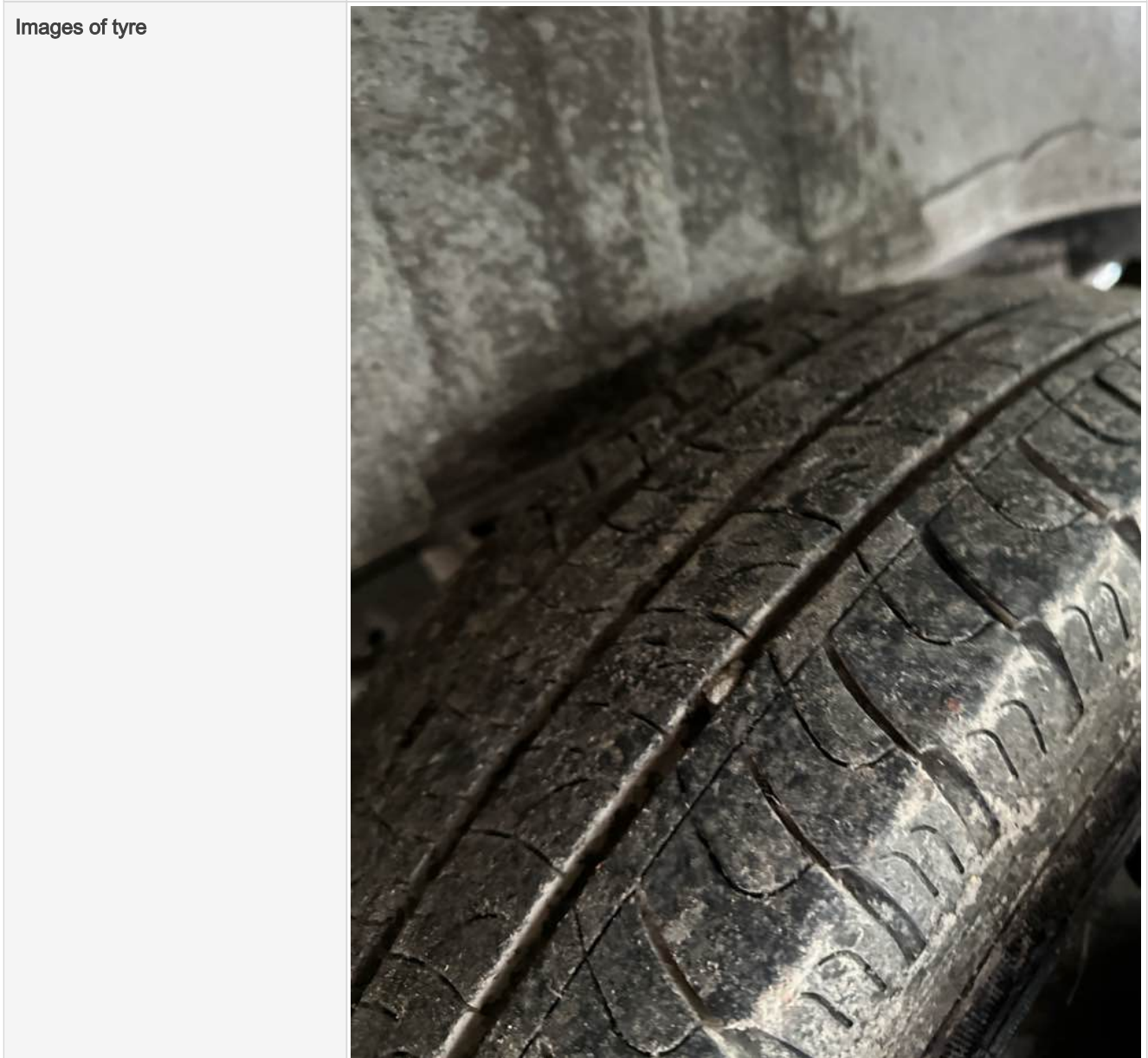
near side Inner (for twin wheel vans)

Is the vehicle a twin wheel axle? (if no don't fill out)	Yes
Age (month/year) Manufactured	02/21
Make, brand.	Good Year
Tyre size	195/75/R16
Pressure 1	
Pressure 2	



BaseVan Initial Inspection

Wearing / Perishing (inner)	none
Wearing / Perishing (outer)	None
tread depth (mm)	6
General comments	good tyre nice tread



Spare wheel

Spare installed? (If no, don't fill out)	No
Age (month/year) Manufactured	
Make, brand.	
Tyre size	



BaseVan Initial Inspection

Pressure 1	
Pressure 2	
Wearing / Perishing (inner)	
Wearing / Perishing (outer)	
tread depth (mm)	
General comments	
Images of tyre	

Vehicle locking

Factory central locking fitted?	Yes
Response from key fob?	Yes
Response from in-cab locking button?	Yes
Do all the doors lock from central locking function?	All
Select the following doors that lock.	N/S Front, O/S Front, N/S SL, N/S Rear, O/S Rear
Method of locking	Fob
In conclusion can all the doors be locked in some way and thus the vehicle can be left unattended at night safely?	Yes



BaseVan Initial Inspection

How many keys present at time of inspection?



Comment


works as usual

In cab checks

Number of seats (cab only)	Driver & 2 passenger
Cab heater check	Works on all settings
Comment on cab heater	good
Electric windows present	Yes
Cab windows function check	Driver side function, Passenger side function
Air conditioning present	Yes
Charging socket present (cigarette lighter)	Yes



BaseVan Initial Inspection


Function working?	Yes
Radio / Media system fitted?	No
Radio / media system check	N/A not installed
Reverse camera present?	No
Reverse camera functioning?	N/A
Show any damage or missing items	

General mechanical checks

Fuel level	1/2 Full
Oil level	Full
Oil conditon	Clean
Start up, chassis battery check	Started, but required boost pack



BaseVan Initial Inspection

Start-up from cold	Instant
Exhaust smoke from cold	Normal
Output Voltage of Alternator test	14.2
Chain or Belt driven engine?	Chain
If belt any proof of change?	-
Coolant condition	Clean
Coolant level	Full
Anti-freeze temperature check	-16
Washer fluid	Full
Brake fluid	Full
Power steering fluid	Maximum
Dashboard warning light	No warning lights
OBD Scan results	
Engine bay photo	
Comment	