



BaseVan Initial Inspection

Inspection details

Name of inspector	Franklyn T Bromfield
Date of inspection	12/04/2024
Signature	

Vehicle details

Vehicle registration	LN64ZXH
Vehicle chassis no.	VF3YDTMFC12615285
Miles (if in km, multiply by 0.62)	-
Make	Peugeot
Model	Boxer
Transmission	Manual, 6 speed
Factory immobiliser installed	Yes
Speed limiter installed	No
Drive configuration	FWD
Gross vehicle weight	3500kg
Towing capacity	3 tonne
Tow bar installed	No

Off side front

Age (month/year) Manufactured	08/23
Make, brand.	Michelin
Tyre size	225/75/R16
Pressure 1	
Pressure 2	
Wearing / Perishing (inner)	none
Wearing / Perishing (outer)	None
tread depth (mm)	8
General comments	virtually brand new



BaseVan Initial Inspection

Images of tyre



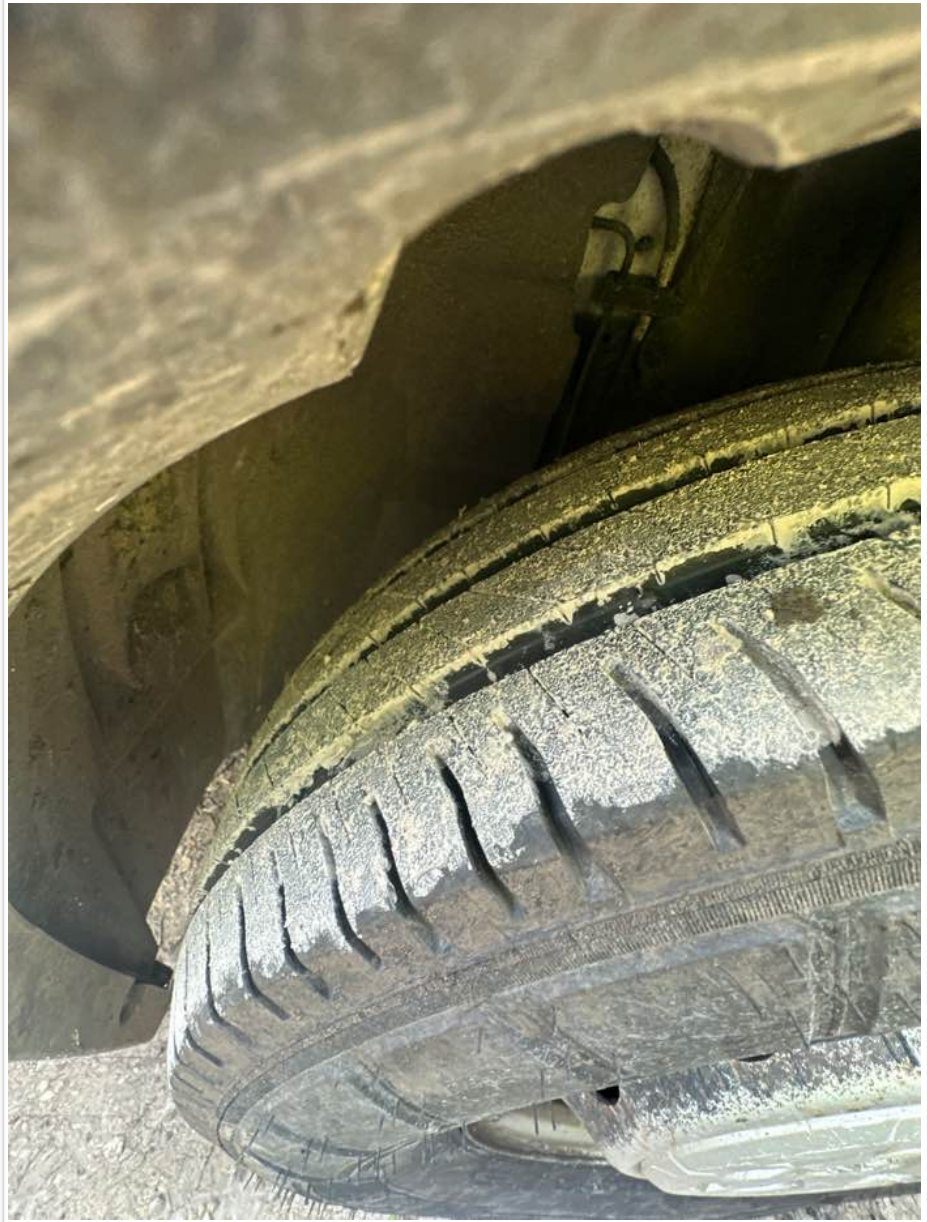
Near side front

Age (month/year) Manufactured	34/22
Make, brand.	Michelin
Tyre size	225/75/R16
Pressure 1	
Pressure 2	
Wearing / Perishing (inner)	none
Wearing / Perishing (outer)	None
tread depth (mm)	8
General comments	virtually brand new



BaseVan Initial Inspection

Images of tyre



near side rear

Age (month/year) Manufactured	34/22
Make, brand.	Michelin
Tyre size	225/75/R16
Pressure 1	
Pressure 2	
Wearing / Perishing (inner)	none
Wearing / Perishing (outer)	None
tread depth (mm)	7
General comments	virtually brand new



BaseVan Initial Inspection

Images of tyre



Off side rear

Age (month/year) Manufactured	30/19
Make, brand.	Michelin
Tyre size	225/75/R16
Pressure 1	
Pressure 2	
Wearing / Perishing (inner)	none
Wearing / Perishing (outer)	None
tread depth (mm)	6
General comments	great condition



BaseVan Initial Inspection

Images of tyre



off side Inner (for twin wheel vans)

Is the vehicle a twin wheel axle? (if no don't fill out)	No
Age (month/year) Manufactured	
Make, brand.	
Tyre size	
Pressure 1	
Pressure 2	
Wearing / Perishing (inner)	
Wearing / Perishing (outer)	



BaseVan Initial Inspection

tread depth (mm)	
General comments	
Images of tyre	

near side Inner (for twin wheel vans)

Is the vehicle a twin wheel axle? (if no don't fill out)	No
Age (month/year) Manufactured	
Make, brand.	
Tyre size	
Pressure 1	
Pressure 2	
Wearing / Perishing (inner)	
Wearing / Perishing (outer)	
tread depth (mm)	
General comments	
Images of tyre	

Spare wheel

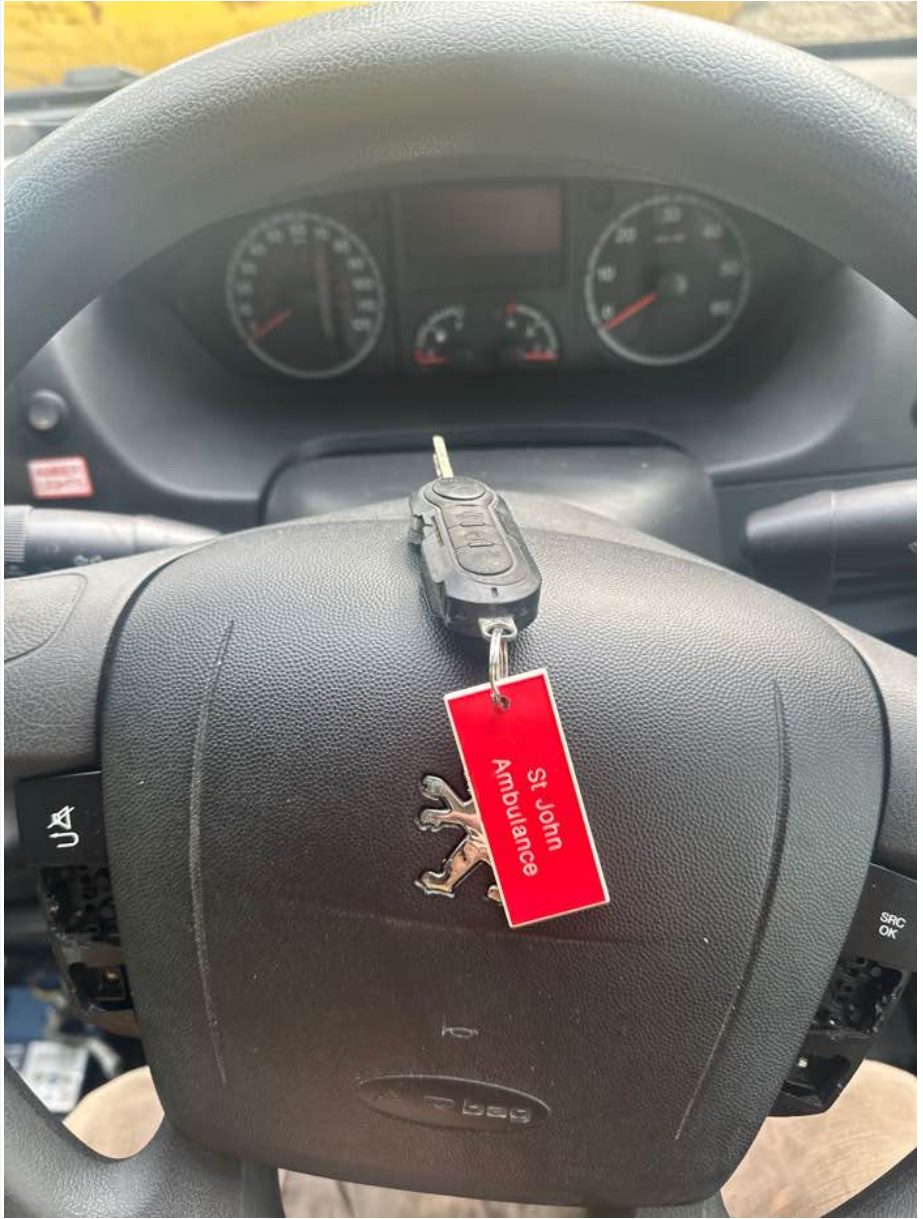
Spare installed? (If no, don't fill out)	No
Age (month/year) Manufactured	
Make, brand.	
Tyre size	
Pressure 1	
Pressure 2	
Wearing / Perishing (inner)	
Wearing / Perishing (outer)	
tread depth (mm)	
General comments	
Images of tyre	

Vehicle locking

Factory central locking fitted?	Yes
Response from key fob?	
Response from in-cab locking button?	Yes
Do all the doors lock from central locking function?	All



BaseVan Initial Inspection

Select the following doors that lock.	N/S Front, O/S Front, N/S SL, N/S Rear, O/S Rear
Method of locking	Fob
In conclusion can all the doors be locked in some way and thus the vehicle can be left unattended at night safely?	Yes
How many keys present at time of inspection?	
Comment	functions as should

In cab checks

Number of seats (cab only)	Driver & 1 passenger
Cab heater check	Works on all settings
Comment on cab heater	functions well



BaseVan Initial Inspection


Electric windows present	Yes
Cab windows function check	Driver side function, Passenger side function
Air conditioning present	Yes
Charging socket present (cigarette lighter)	Yes
Function working?	Yes
Radio / Media system fitted?	Yes
Radio / media system check	Functions
Reverse camera present?	Yes
Reverse camera functioning?	No
Show any damage or missing items	

General mechanical checks

Fuel level	1/2 Full
Oil level	Full
Oil conditon	Clean
Start up, chassis battery check	Started without jump pack
Start-up from cold	Instant
Exhaust smoke from cold	Normal
Output Voltage of Alternator test	13.2
Chain or Belt driven engine?	Belt
If belt any proof of change?	no
Coolant condition	Clean
Coolant level	Full
Anti-freeze temperature check	-18
Washer fluid	Full
Brake fluid	Full
Power steering fluid	Maximum
Dashboard warning light	SRS / Airbag
OBD Scan results	



BaseVan Initial Inspection

<p>Engine bay photo</p>	
<p>Comment</p>	<p>MFD not functional</p>