




## BaseVan Initial Inspection

### Inspection details

Name of inspector	Franklyn T Bromfield
Date of inspection	26/04/2024
Signature	

### Vehicle details

Vehicle registration	CU11FWV
Vehicle chassis no.	VF1MAF4DE44739509
Miles (if in km, multiply by 0.62)	249077
Make	Renault
Model	Master
Transmission	Manual, 6 speed
Factory immobiliser installed	Yes
Speed limiter installed	No
Drive configuration	FWD
Gross vehicle weight	3500kg
Towing capacity	2500kg
Tow bar installed	No

### Off side front

Age (month/year) Manufactured	22/23
Make, brand.	Michelin
Tyre size	225/65/R16
Pressure 1	
Pressure 2	
Wearing / Perishing (inner)	none
Wearing / Perishing (outer)	None
tread depth (mm)	6
General comments	good tyre



## BaseVan Initial Inspection

Images of tyre



### Near side front

Age (month/year) Manufactured	22/23
Make, brand.	Michelin
Tyre size	225/65/R16
Pressure 1	
Pressure 2	
Wearing / Perishing (inner)	none
Wearing / Perishing (outer)	None
tread depth (mm)	6
General comments	good tyre, even wear across fronts



## BaseVan Initial Inspection

Images of tyre



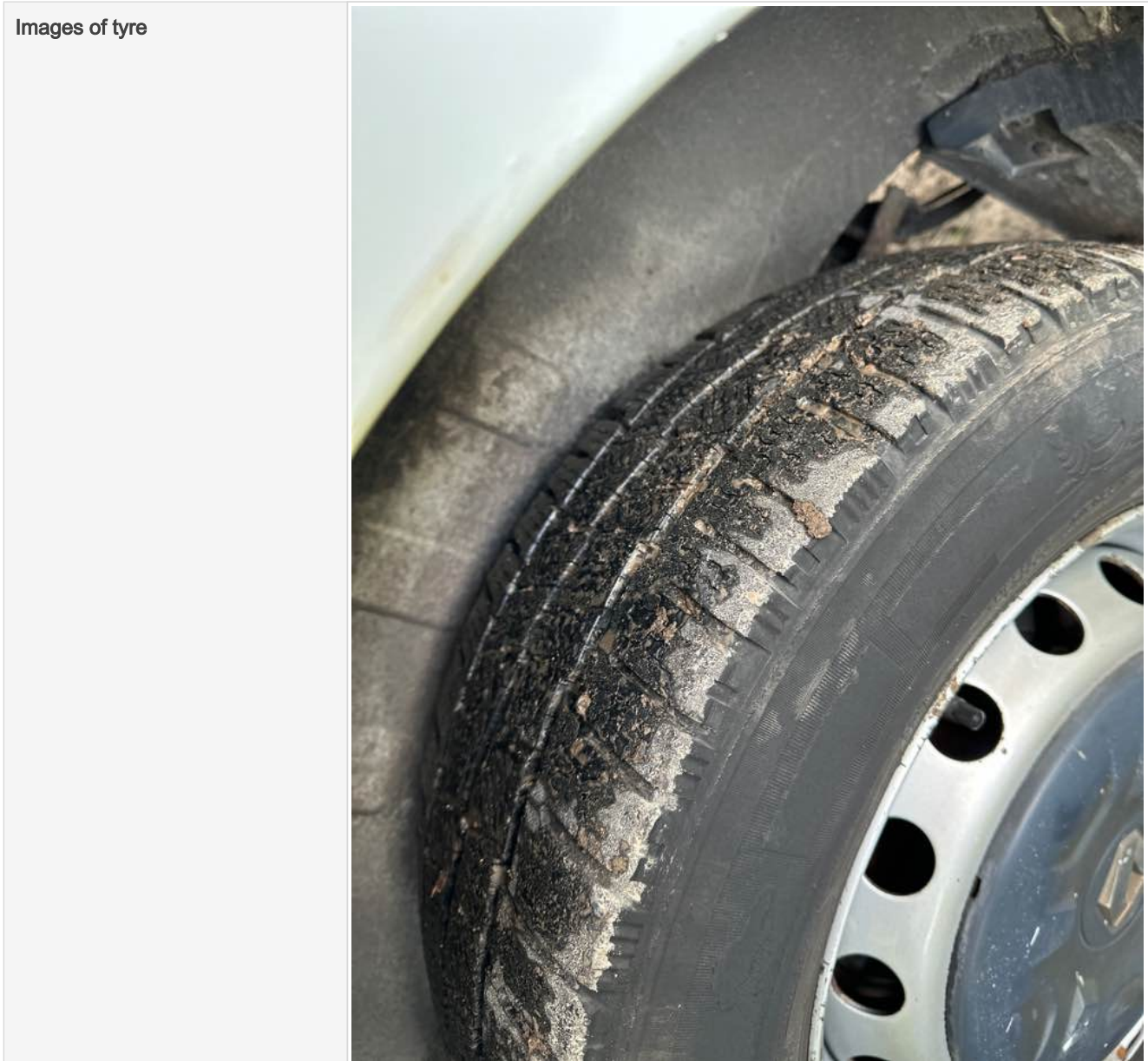
### near side rear

Age (month/year) Manufactured	38/21
Make, brand.	Michelin
Tyre size	225/65/R16
Pressure 1	
Pressure 2	
Wearing / Perishing (inner)	none
Wearing / Perishing (outer)	None
tread depth (mm)	5
General comments	good, but used tyre





## BaseVan Initial Inspection



### Off side rear

Age (month/year) Manufactured	38/21
Make, brand.	Michelin
Tyre size	225/65/R16
Pressure 1	
Pressure 2	
Wearing / Perishing (inner)	none
Wearing / Perishing (outer)	None
tread depth (mm)	5
General comments	good tyre, used, even wear across reae



## BaseVan Initial Inspection

Images of tyre



### off side Inner (for twin wheel vans)

Is the vehicle a twin wheel axle? (if no don't fill out)	No
Age (month/year) Manufactured	
Make, brand.	
Tyre size	
Pressure 1	
Pressure 2	
Wearing / Perishing (inner)	
Wearing / Perishing (outer)	



## BaseVan Initial Inspection

tread depth (mm)	
General comments	
Images of tyre	

### near side Inner (for twin wheel vans)

Is the vehicle a twin wheel axle? (if no don't fill out)	No
Age (month/year) Manufactured	
Make, brand.	
Tyre size	
Pressure 1	
Pressure 2	
Wearing / Perishing (inner)	
Wearing / Perishing (outer)	
tread depth (mm)	
General comments	
Images of tyre	

### Spare wheel


Spare installed? (If no, don't fill out)	No
Age (month/year) Manufactured	
Make, brand.	
Tyre size	
Pressure 1	
Pressure 2	
Wearing / Perishing (inner)	
Wearing / Perishing (outer)	
tread depth (mm)	
General comments	
Images of tyre	

### Vehicle locking

Factory central locking fitted?	Yes
Response from key fob?	Yes
Response from in-cab locking button?	Yes
Do all the doors lock from central locking function?	All



## BaseVan Initial Inspection

Select the following doors that lock.	N/S Front, O/S Front, N/S SL, N/S Rear, O/S Rear
Method of locking	Fob
In conclusion can all the doors be locked in some way and thus the vehicle can be left unattended at night safely?	Yes
How many keys present at time of inspection?	
Comment	works as should

### In cab checks

Number of seats (cab only)	Driver only
Cab heater check	Works on all settings
Comment on cab heater	functional





## BaseVan Initial Inspection

Electric windows present	Yes
Cab windows function check	Driver side function, Passenger side function
Air conditioning present	No
Charging socket present (cigarette lighter)	Yes
Function working?	Yes
Radio / Media system fitted?	Yes
Radio / media system check	Functions
Reverse camera present?	No
Reverse camera functioning?	N/A
Show any damage or missing items	


## General mechanical checks

Fuel level	1/2 Full
Oil level	Full
Oil conditon	Clean
Start up, chassis battery check	Started without jump pack
Start-up from cold	Instant
Exhaust smoke from cold	Normal
Output Voltage of Alternator test	13.8
Chain or Belt driven engine?	Chain
If belt any proof of change?	-
Coolant condition	Clean
Coolant level	Full
Anti-freeze temperature check	-14
Washer fluid	Full
Brake fluid	Full
Power steering fluid	Maximum
Dashboard warning light	No warning lights
OBD Scan results	





## BaseVan Initial Inspection

<p>Engine bay photo</p>	
<p>Comment</p>	<p>mechanically very good!</p>