




Basevan.com General Inspection

Inspection details

Name of inspector	Franklyn T Bromfield
Date of inspection	27/03/2025
Signature	

Vehicle details

Vehicle registration	WA06KKD
Vehicle chassis no.	X FC65C0005592470
Miles (if in km, multiply by 0.62)	121,769mi (196403km on clocks)
Make	Iveco
Model	Daily
Transmission	Manual, 6 speed
Factory immobiliser installed	Yes
Speed limiter installed	Yes
Drive configuration	RWD
Gross Vehicle Weight (kg)	6500
Towing capacity	3500kg
Tow bar installed	No

Off side front

Age (month/year) Manufactured	11/18
Make, brand.	Hankook
Tyre size	225/75/R16
Pressure 1	35ps
Pressure 2	50psi
Wearing / Perishing (inner)	none
Wearing / Perishing (outer)	None
tread depth (mm)	6
General comments	good tyre still



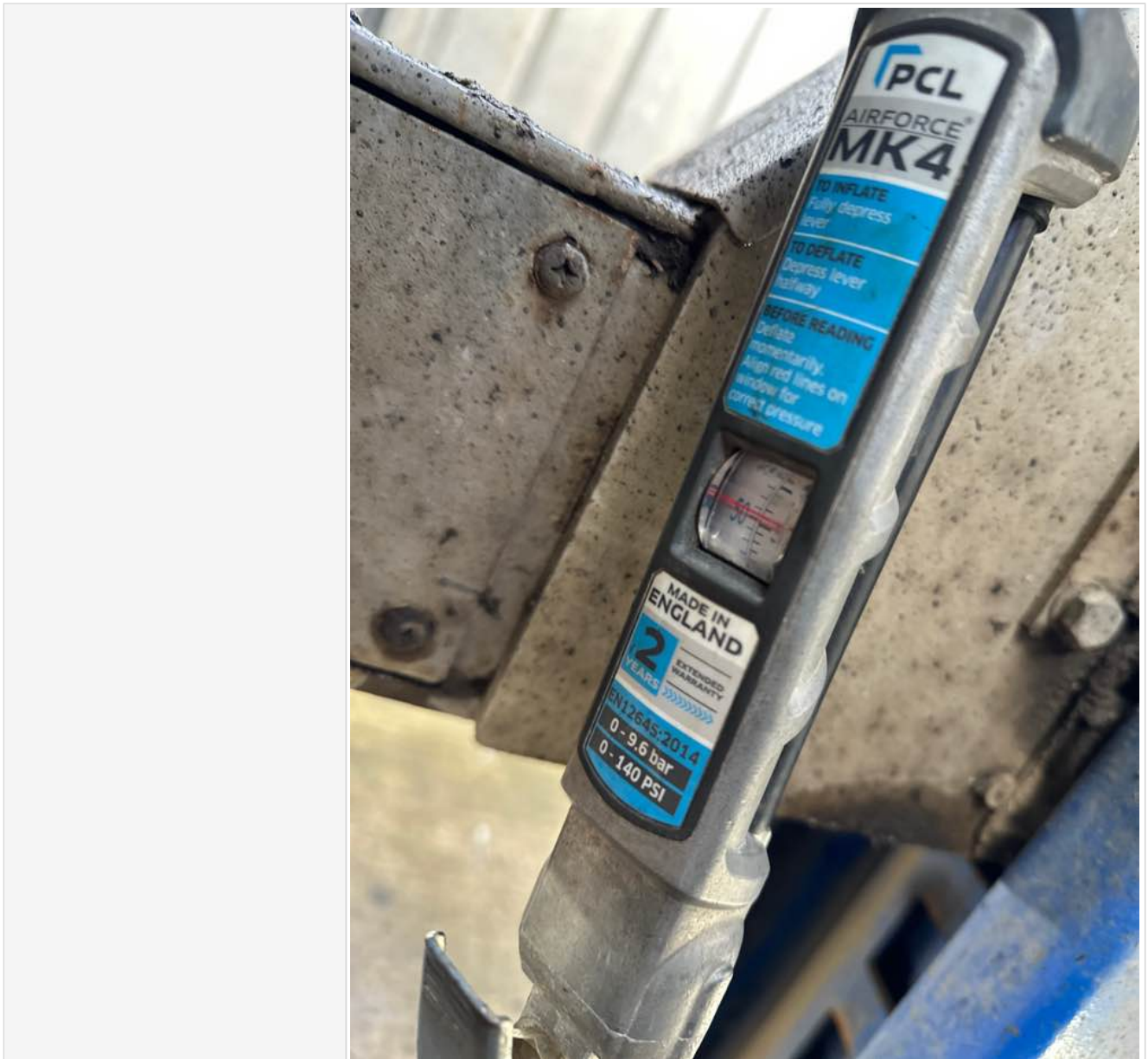
Basevan.com General Inspection

Images of tyre





Basevan.com General Inspection



Near side front

Age (month/year) Manufactured	13/24
Make, brand.	Other (comment)
Tyre size	225/75/R16
Pressure 1	50ps
Pressure 2	50ps
Wearing / Perishing (inner)	none
Wearing / Perishing (outer)	None
tread depth (mm)	8
General comments	brand spanker



Basevan.com General Inspection

Images of tyre





Basevan.com General Inspection



near side rear

Age (month/year) Manufactured	28/17
Make, brand.	Hankook
Tyre size	225/75/R16
Pressure 1	42ps
Pressure 2	50ps
Wearing / Perishing (inner)	none
Wearing / Perishing (outer)	Slight
tread depth (mm)	5
General comments	okay, moderate kerb rash



Basevan.com General Inspection

Images of tyre





Basevan.com General Inspection




Off side rear

Age (month/year) Manufactured	Cannot be seen
Make, brand.	Hankook
Tyre size	225/75/R16
Pressure 1	
Pressure 2	
Wearing / Perishing (inner)	none
Wearing / Perishing (outer)	None
tread depth (mm)	6

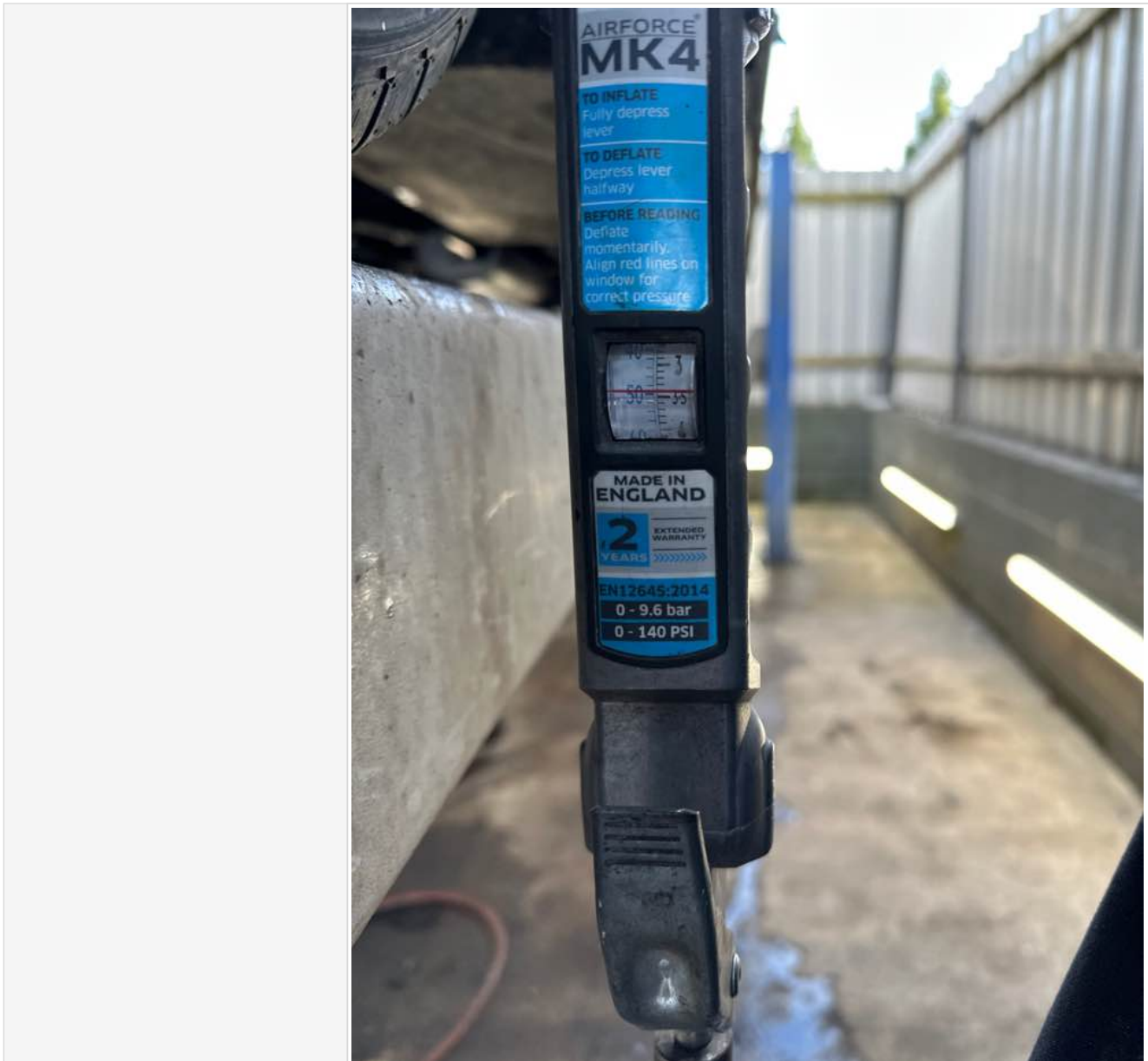


Basevan.com General Inspection

General comments	looks a recent tyre, date stamp on inner, can't be seen with wheel on, valve cap missing
Images of tyre	



Basevan.com General Inspection




off side Inner (for twin wheel vans)

Is the vehicle a twin wheel axle? (if no don't fill out)	Yes
Age (month/year) Manufactured	10/16
Make, brand.	Michelin
Tyre size	225/75/R16
Pressure 1	48psi
Pressure 2	50psi
Wearing / Perishing (inner)	none
Wearing / Perishing (outer)	None



Basevan.com General Inspection


tread depth (mm)	4
General comments	getting low on tread, NOT MATCHING outer
Images of tyre	

near side Inner (for twin wheel vans)

Is the vehicle a twin wheel axle? (if no don't fill out)	Yes
Age (month/year) Manufactured	10/20
Make, brand.	GT Radial
Tyre size	225/75/R16
Pressure 1	39ps
Pressure 2	50ps



Basevan.com General Inspection

Wearing / Perishing (inner)	none
Wearing / Perishing (outer)	None
tread depth (mm)	8
General comments	nice tyre, however does NOT match near side outer
Images of tyre	



Basevan.com General Inspection



Spare wheel

Spare installed? (If no, don't fill out)	
Age (month/year) Manufactured	
Make, brand.	
Tyre size	
Pressure 1	
Pressure 2	
Wearing / Perishing (inner)	
Wearing / Perishing (outer)	



Basevan.com General Inspection

tread depth (mm)	
General comments	
Images of tyre	

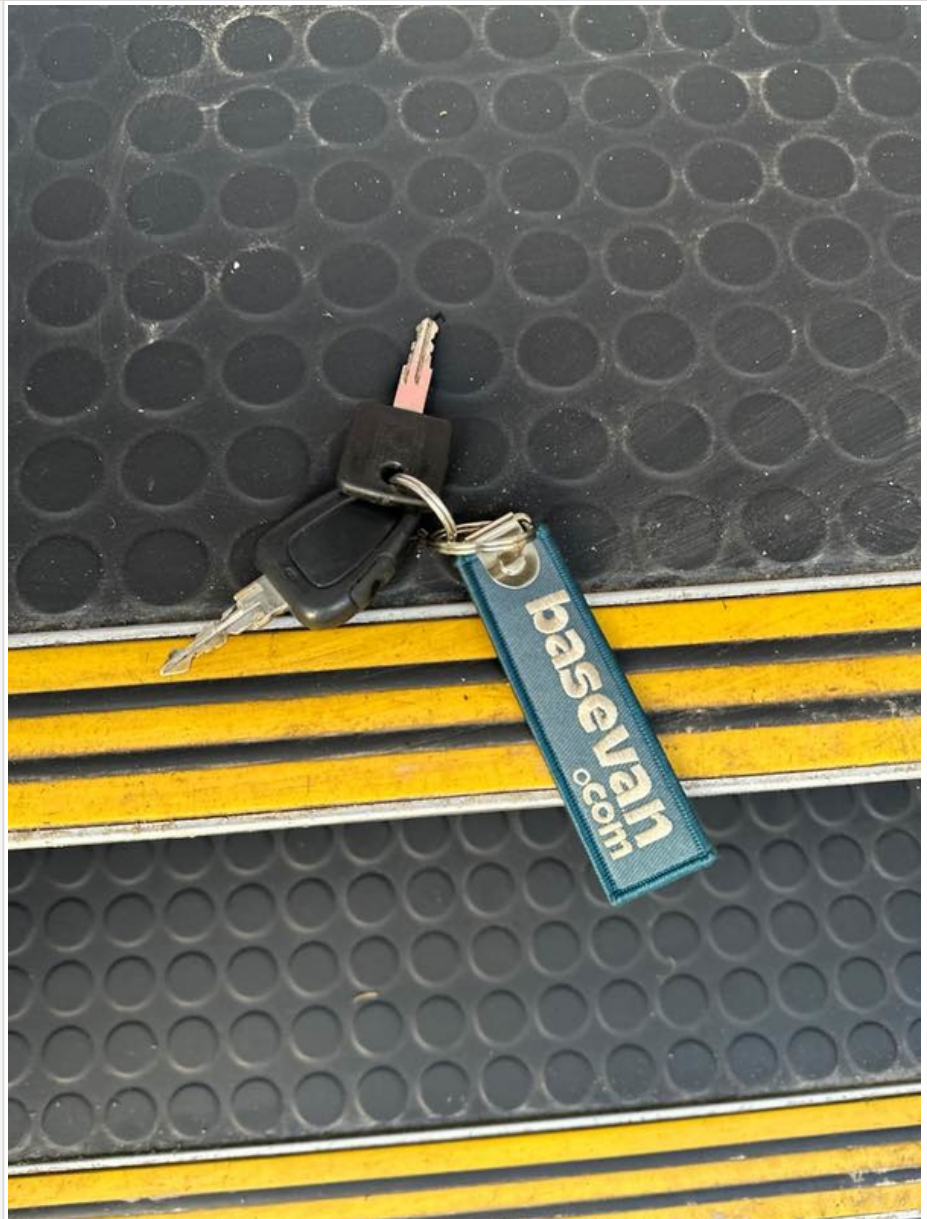
Vehicle locking

Factory central locking fitted?	No
Response from key fob?	N/A
Response from in-cab locking button?	N/A
Do all the doors lock from central locking function?	None
Select the following doors that lock.	N/S Front, O/S Front, N/S SL
Method of locking	Key
In conclusion can all the doors be locked in some way and thus the vehicle can be left unattended at night safely?	Yes



Basevan.com General Inspection

How many keys present at time of inspection?



Comment

Front doors lock off key, side door emergency access hatch lockable on key

In cab checks

Number of seats (cab only)	Driver & 1 passenger
Cab heater check	Works only on max
Comment on cab heater	Functional only on max pwr, report to mick butler
Electric windows present	No
Cab windows function check	Driver side function, Passenger side function
Air conditioning present	No
Charging socket present (cigarette lighter)	Yes



Basevan.com General Inspection

Function working?	Yes
Radio / Media system fitted?	Yes
Radio / media system check	Functions
Reverse camera present?	No
Reverse camera functioning?	N/A
Show any damage or missing items	

General mechanical checks

Fuel level	1/2 Full
Oil level	Full
Oil conditon	Clean
Start up, chassis battery check	Started, but required boost pack, Chassis battery requires charging
Start-up from cold	2 seconds
Exhaust smoke from cold	Normal
Output Voltage of Alternator test	13.6
Chain or Belt driven engine?	Chain
If belt any proof of change?	n/a
Coolant condition	Clean
Coolant level	Full
Anti-freeze temperature check	-16
Washer fluid	Full
Brake fluid	Full
Power steering fluid	Maximum
Dashboard warning light	No warning lights
OBD Scan results	



Basevan.com General Inspection

Engine bay photo





Basevan.com General Inspection





Basevan.com General Inspection



Comment

mechanically good, battery terminals replaced as worn to point of no contact