



Basevan.com General Inspection

Inspection details

| | |
|--------------------|--|
| Name of inspector | Franklyn T Bromfield |
| Date of inspection | 05/04/2025 |
| Signature |  |

Vehicle details

| | |
|------------------------------------|-------------------|
| Vehicle registration | LO14VGM |
| Vehicle chassis no. | VF3YDTMFC12578837 |
| Miles (if in km, multiply by 0.62) | 118.854 |
| Make | peugeot |
| Model | boxer |
| Transmission | Manual, 6 speed |
| Factory immobiliser installed | Yes |
| Speed limiter installed | No |
| Drive configuration | FWD |
| Gross Vehicle Weight (kg) | 3500 |
| Towing capacity | 2500 |
| Tow bar installed | No |

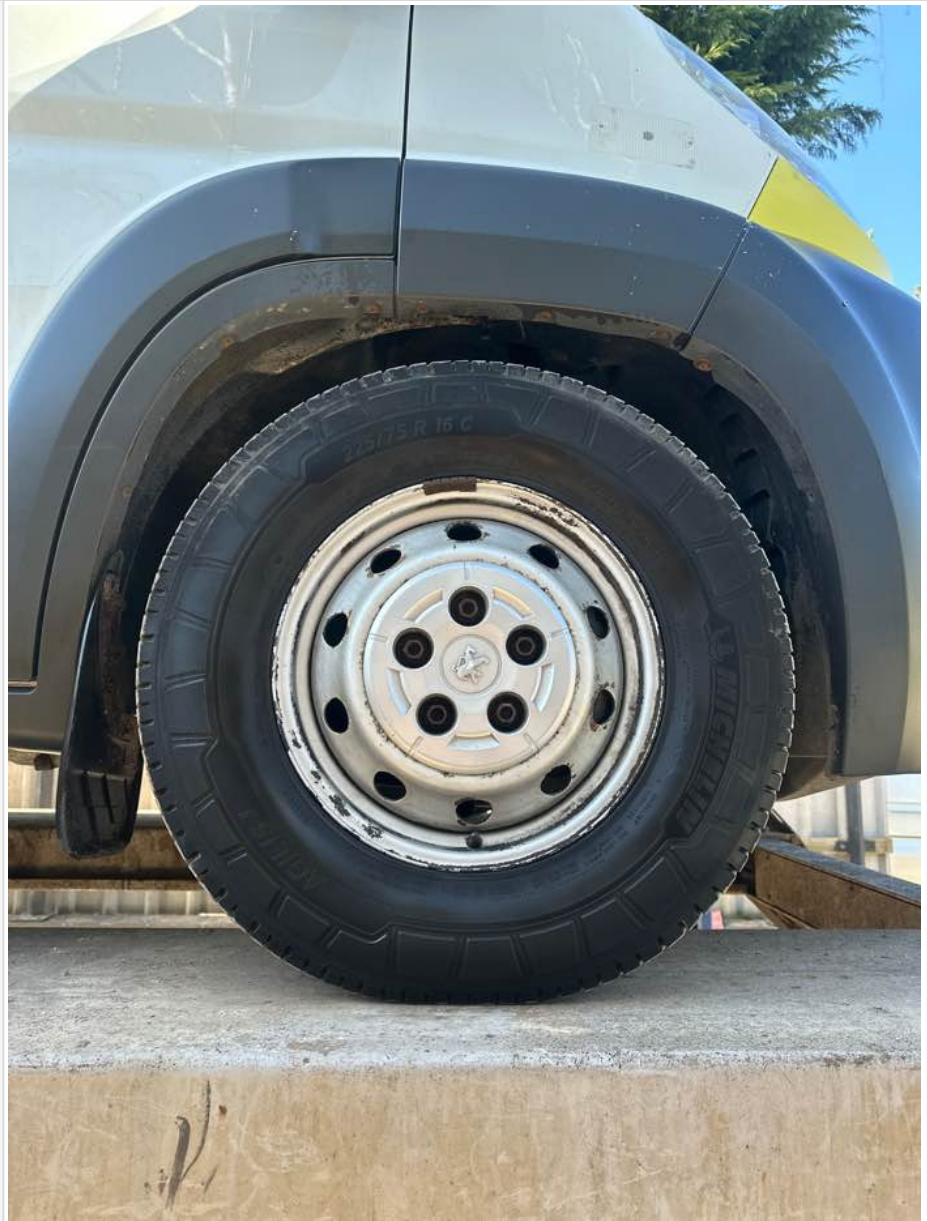
Off side front

| | |
|-------------------------------|------------|
| Age (month/year) Manufactured | 32/21 |
| Make, brand. | Michelin |
| Tyre size | 225/75/R16 |
| Pressure 1 | |
| Pressure 2 | |
| Wearing / Perishing (inner) | none |
| Wearing / Perishing (outer) | None |
| tread depth (mm) | 7 |
| General comments | great tyre |



Basevan.com General Inspection

Images of tyre





Basevan.com General Inspection



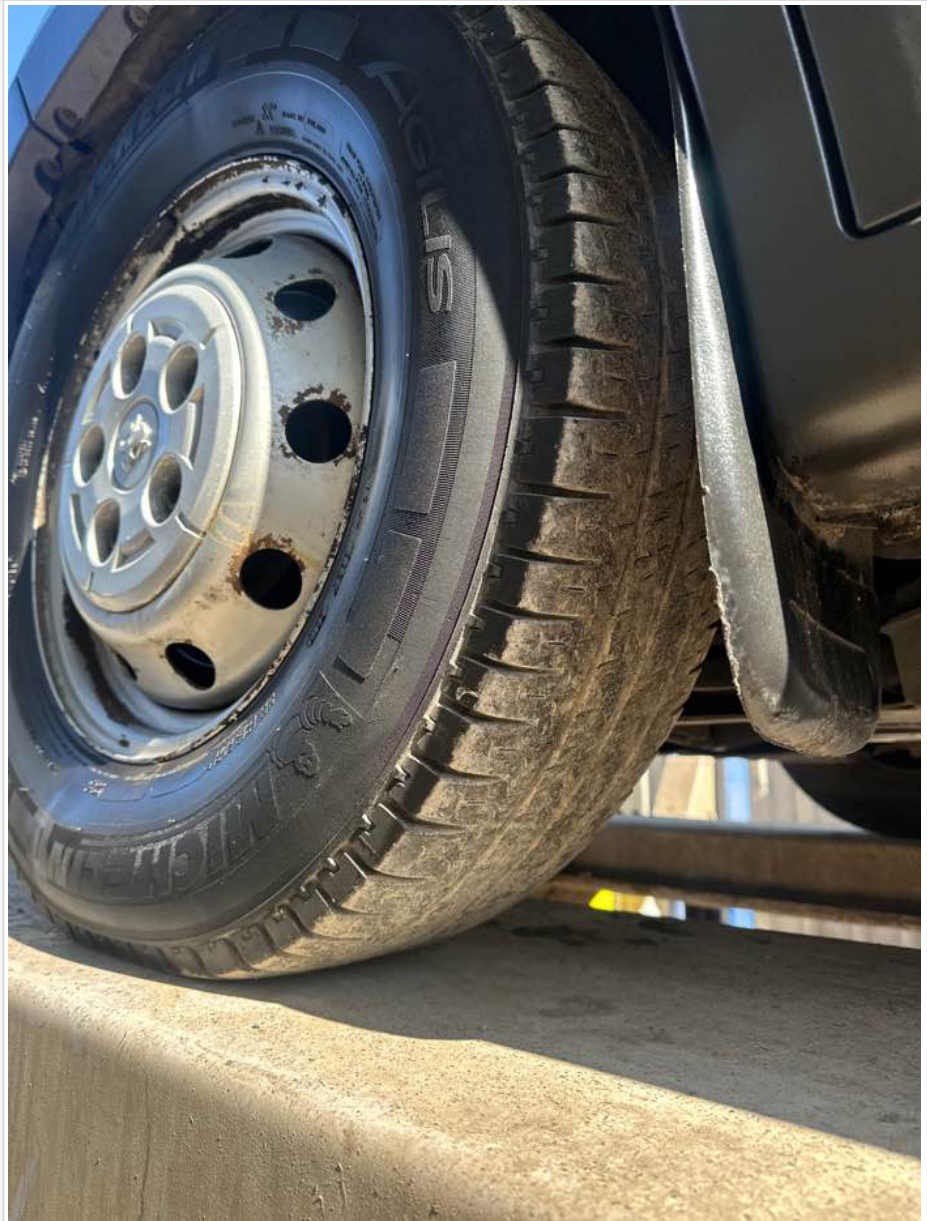
Near side front

| | |
|-------------------------------|-----------------------------|
| Age (month/year) Manufactured | 36/19 |
| Make, brand. | Michelin |
| Tyre size | 225/75/R16 |
| Pressure 1 | |
| Pressure 2 | |
| Wearing / Perishing (inner) | none |
| Wearing / Perishing (outer) | None |
| tread depth (mm) | 6 |
| General comments | good tyre but older than OS |



Basevan.com General Inspection

Images of tyre





Basevan.com General Inspection



near side rear

| | |
|-------------------------------|-----------------------|
| Age (month/year) Manufactured | 33/21 |
| Make, brand. | Continental |
| Tyre size | 225/75/R16 |
| Pressure 1 | |
| Pressure 2 | |
| Wearing / Perishing (inner) | none |
| Wearing / Perishing (outer) | None |
| tread depth (mm) | 6 |
| General comments | good tyre, nice tread |



Basevan.com General Inspection

Images of tyre



Off side rear

| | |
|-------------------------------|-----------------------------|
| Age (month/year) Manufactured | 02/23 |
| Make, brand. | Michelin |
| Tyre size | 225/75/R16 |
| Pressure 1 | |
| Pressure 2 | |
| Wearing / Perishing (inner) | none |
| Wearing / Perishing (outer) | None |
| tread depth (mm) | 7 |
| General comments | basically new, minimal wear |



Basevan.com General Inspection

Images of tyre

off side Inner (for twin wheel vans)

| | |
|--|----|
| Is the vehicle a twin wheel axle? (if no don't fill out) | No |
| Age (month/year) Manufactured | |
| Make, brand. | |
| Tyre size | |
| Pressure 1 | |
| Pressure 2 | |
| Wearing / Perishing (inner) | |
| Wearing / Perishing (outer) | |



Basevan.com General Inspection

| | |
|------------------|--|
| tread depth (mm) | |
| General comments | |
| Images of tyre | |

near side Inner (for twin wheel vans)

| | |
|--|----|
| Is the vehicle a twin wheel axle? (if no don't fill out) | No |
| Age (month/year) Manufactured | |
| Make, brand. | |
| Tyre size | |
| Pressure 1 | |
| Pressure 2 | |
| Wearing / Perishing (inner) | |
| Wearing / Perishing (outer) | |
| tread depth (mm) | |
| General comments | |
| Images of tyre | |

Spare wheel


| | |
|--|----|
| Spare installed? (If no, don't fill out) | No |
| Age (month/year) Manufactured | |
| Make, brand. | |
| Tyre size | |
| Pressure 1 | |
| Pressure 2 | |
| Wearing / Perishing (inner) | |
| Wearing / Perishing (outer) | |
| tread depth (mm) | |
| General comments | |
| Images of tyre | |

Vehicle locking

| | |
|--|------|
| Factory central locking fitted? | Yes |
| Response from key fob? | No |
| Response from in-cab locking button? | No |
| Do all the doors lock from central locking function? | Some |



Basevan.com General Inspection

| | |
|--|---|
| Select the following doors that lock. | O/S Front |
| Method of locking | Key |
| In conclusion can all the doors be locked in some way and thus the vehicle can be left unattended at night safely? | No |
| How many keys present at time of inspection? |  |
| Comment | |
| | Drivers door locks off key - INSPECT CENTRAL LOCKING |

In cab checks

| | |
|----------------------------|-----------------------|
| Number of seats (cab only) | Driver & 1 passenger |
| Cab heater check | Works on all settings |
| Comment on cab heater | 1,2,3,4 all good |



Basevan.com General Inspection

| | |
|---|---|
| Electric windows present | Yes |
| Cab windows function check | Driver side function, Passenger side function |
| Air conditioning present | Yes |
| Charging socket present (cigarette lighter) | Yes |
| Function working? | Yes |
| Radio / Media system fitted? | Yes |
| Radio / media system check | Functions |
| Reverse camera present? | Yes |
| Reverse camera functioning? | No |
| Show any damage or missing items | |

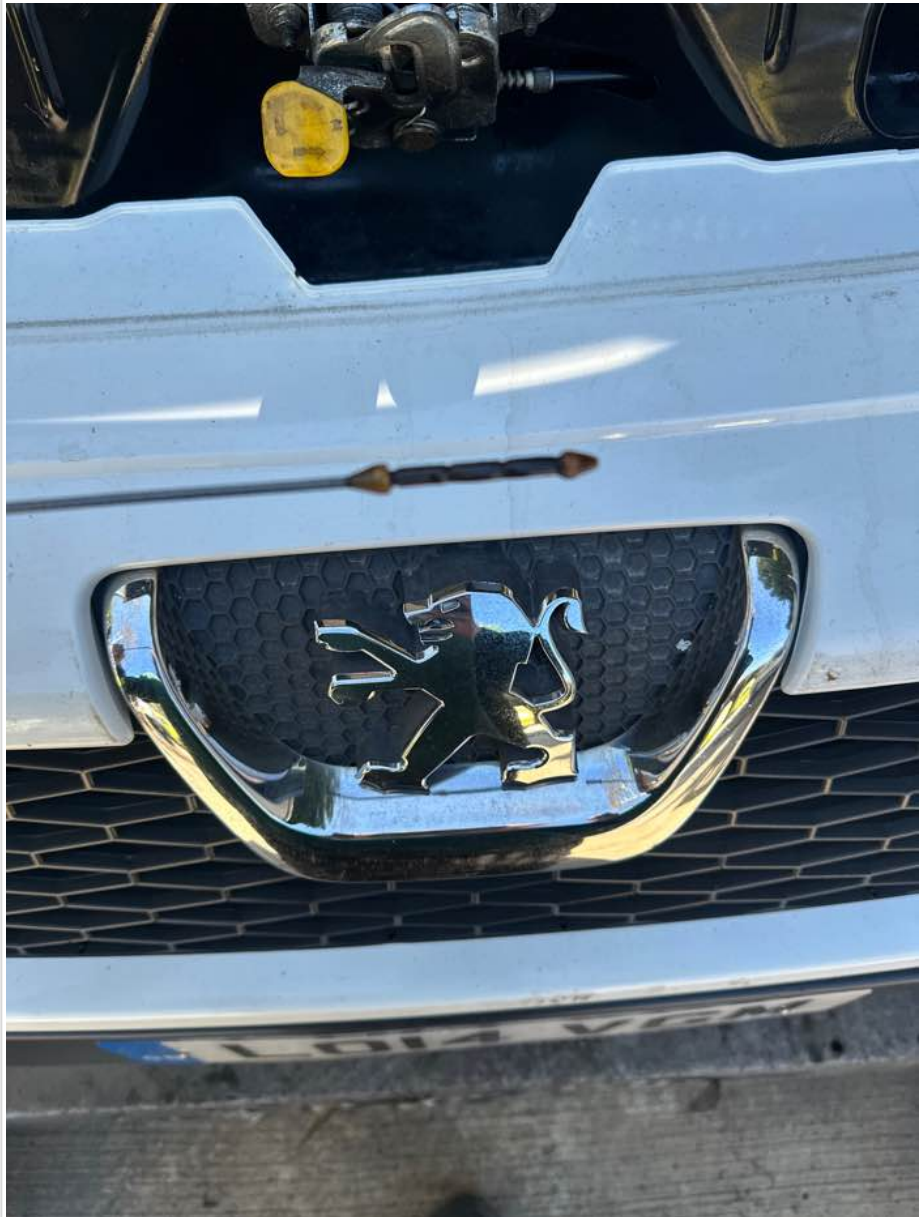
General mechanical checks

| | |
|-----------------------------------|--|
| Fuel level | 1/2 Full |
| Oil level | Full |
| Oil conditon | Clean |
| Start up, chassis battery check | Started without jump pack, Chassis battery new |
| Start-up from cold | Instant |
| Exhaust smoke from cold | Normal |
| Output Voltage of Alternator test | 13.7 |
| Chain or Belt driven engine? | Chain |
| If belt any proof of change? | n/a |
| Coolant condition | Clean |
| Coolant level | Full |
| Anti-freeze temperature check | -16 |
| Washer fluid | Full |
| Brake fluid | Full |
| Power steering fluid | Maximum |
| Dashboard warning light | No warning lights |
| OBD Scan results | |



Basevan.com General Inspection

Engine bay photo



Comment

mechanically very good