




Basevan.com General Inspection

Inspection details

Name of inspector	Wallis
Date of inspection	24/04/2025
Signature	

Vehicle details

Vehicle registration	LX11CNY
Vehicle chassis no.	VF1MAF4CR44821041
Miles (if in km, multiply by 0.62)	91678
Make	Renault
Model	Master
Transmission	Manual, 6 speed
Factory immobiliser installed	Yes
Speed limiter installed	N/A
Drive configuration	FWD
Gross Vehicle Weight (kg)	3500
Towing capacity	2500
Tow bar installed	No

Off side front

Age (month/year) Manufactured	01/20
Make, brand.	Continental
Tyre size	225/65/R16
Pressure 1	35
Pressure 2	
Wearing / Perishing (inner)	Replace soon
Wearing / Perishing (outer)	Replace soon
tread depth (mm)	3
General comments	



Basevan.com General Inspection

Images of tyre



Near side front

Age (month/year) Manufactured	38/18
Make, brand.	Michelin
Tyre size	235/65/R16
Pressure 1	44
Pressure 2	
Wearing / Perishing (inner)	Medium
Wearing / Perishing (outer)	Medium
tread depth (mm)	4
General comments	



Basevan.com General Inspection

Images of tyre



near side rear

Age (month/year) Manufactured	37/20
Make, brand.	Hankook
Tyre size	235/65/R16
Pressure 1	50
Pressure 2	
Wearing / Perishing (inner)	Slight
Wearing / Perishing (outer)	Slight
tread depth (mm)	7
General comments	



Basevan.com General Inspection

Images of tyre



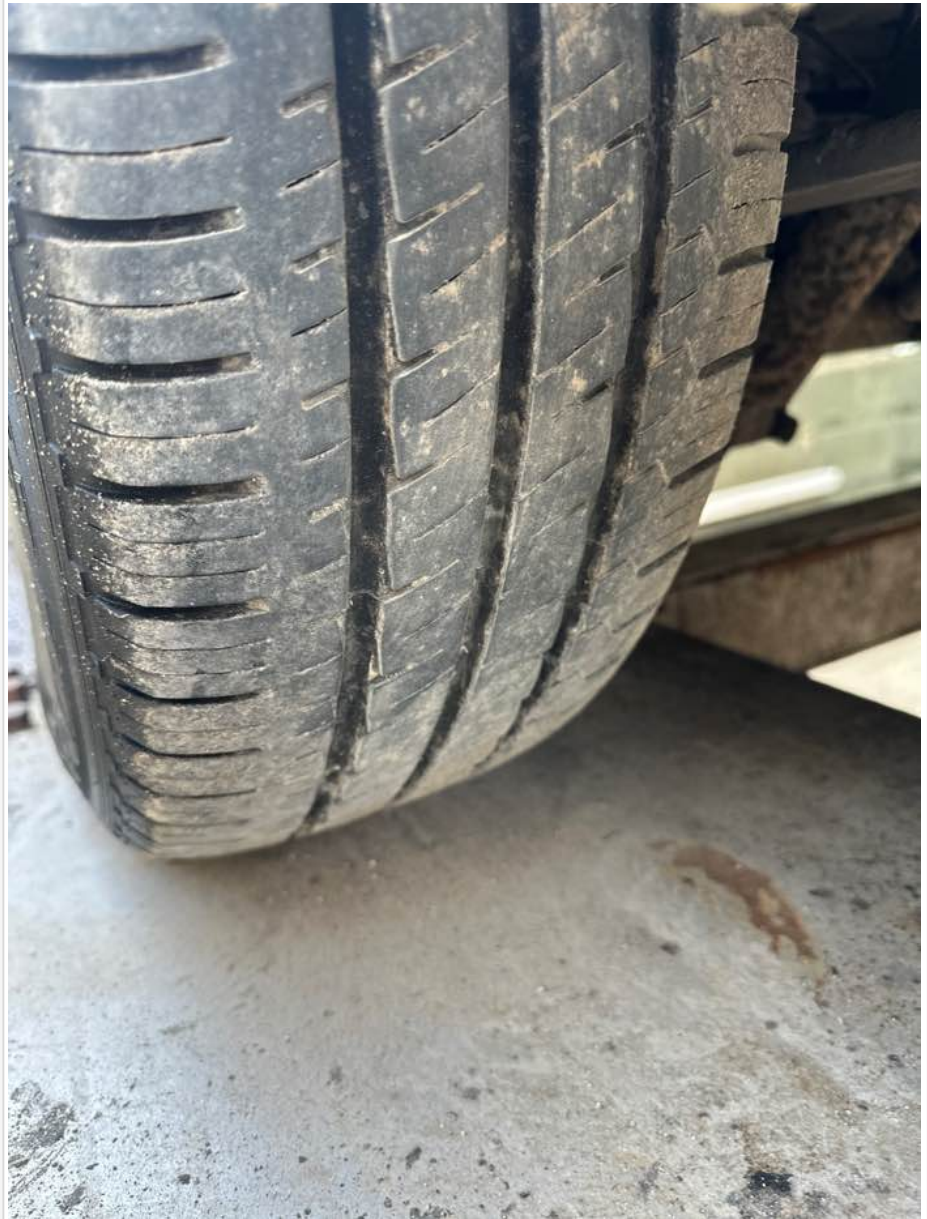
Off side rear

Age (month/year) Manufactured	32/20
Make, brand.	Hankook
Tyre size	225/65/R16
Pressure 1	50
Pressure 2	
Wearing / Perishing (inner)	Slight
Wearing / Perishing (outer)	Slight
tread depth (mm)	7
General comments	



Basevan.com General Inspection

Images of tyre



off side Inner (for twin wheel vans)

Is the vehicle a twin wheel axle? (if no don't fill out)	No
Age (month/year) Manufactured	
Make, brand.	
Tyre size	
Pressure 1	
Pressure 2	
Wearing / Perishing (inner)	
Wearing / Perishing (outer)	



Basevan.com General Inspection

tread depth (mm)	
General comments	
Images of tyre	

near side Inner (for twin wheel vans)

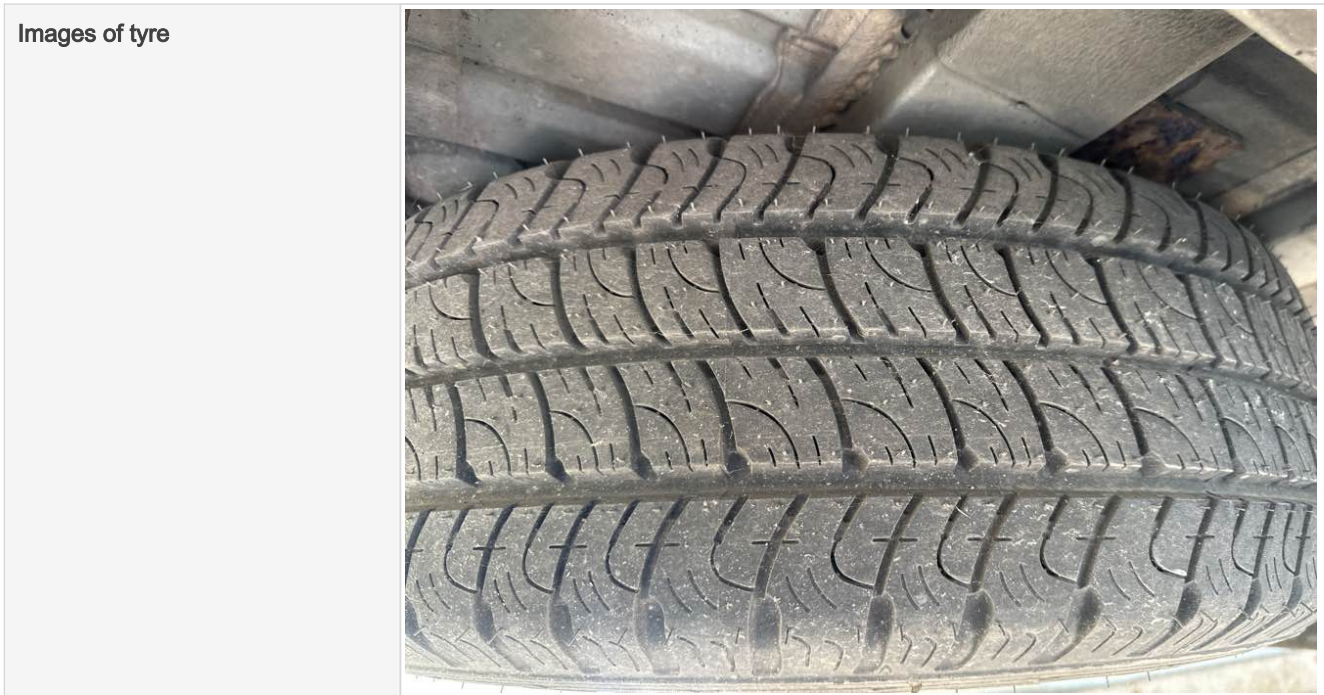
Is the vehicle a twin wheel axle? (if no don't fill out)	No
Age (month/year) Manufactured	
Make, brand.	
Tyre size	
Pressure 1	
Pressure 2	
Wearing / Perishing (inner)	
Wearing / Perishing (outer)	
tread depth (mm)	
General comments	
Images of tyre	

Spare wheel

Spare installed? (if no, don't fill out)	Yes
Age (month/year) Manufactured	50/10
Make, brand.	Good Year
Tyre size	225/65/R16
Pressure 1	30
Pressure 2	
Wearing / Perishing (inner)	none
Wearing / Perishing (outer)	None
tread depth (mm)	10
General comments	



Basevan.com General Inspection




Vehicle locking

Factory central locking fitted?	Yes
Response from key fob?	Yes
Response from in-cab locking button?	Yes
Do all the doors lock from central locking function?	All
Select the following doors that lock.	N/S Front, O/S Front, N/S SL, N/S Rear, O/S Rear
Method of locking	Fob
In conclusion can all the doors be locked in some way and thus the vehicle can be left unattended at night safely?	Yes



Basevan.com General Inspection

<p>How many keys present at time of inspection?</p>	
<p>Comment</p>	

In cab checks

Number of seats (cab only)	Driver only
Cab heater check	Works on all settings
Comment on cab heater	
Electric windows present	Yes
Cab windows function check	Driver side function, Passenger side function
Air conditioning present	Yes
Charging socket present (cigarette lighter)	Yes



Basevan.com General Inspection

Function working?	N/A
Radio / Media system fitted?	Yes
Radio / media system check	Functions
Reverse camera present?	No
Reverse camera functioning?	N/A
Show any damage or missing items	

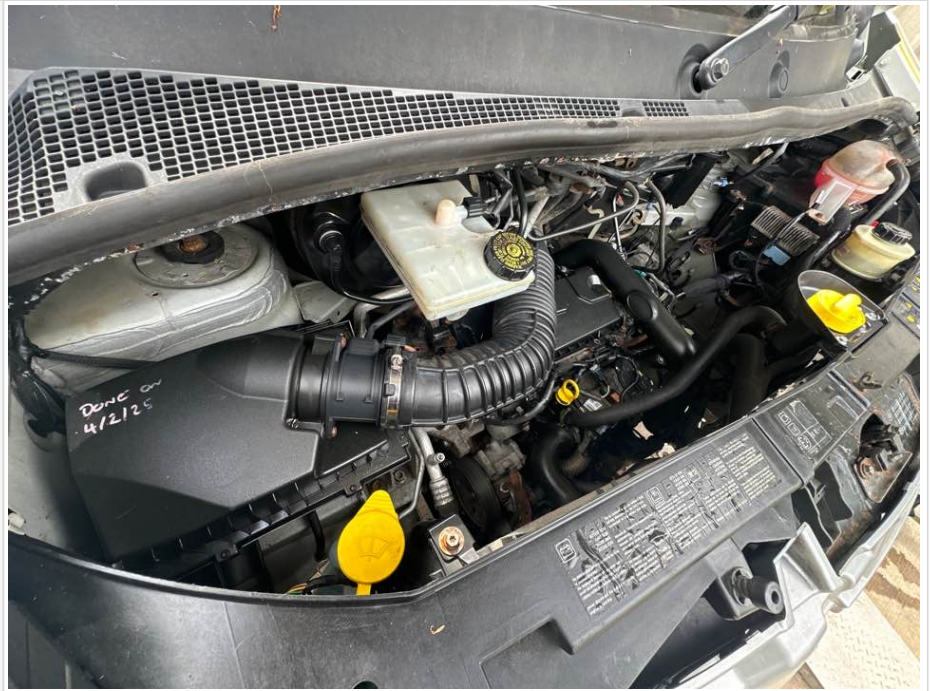
General mechanical checks

Fuel level	Full
Oil level	Full
Oil condition	Clean
Start up, chassis battery check	Started, but required boost pack
Start-up from cold	2 seconds
Exhaust smoke from cold	Normal
Output Voltage of Alternator test	14.1
Chain or Belt driven engine?	Chain
If belt any proof of change?	
Coolant condition	Dirty, Clean
Coolant level	Full
Anti-freeze temperature check	-23
Washer fluid	Full
Brake fluid	Full
Power steering fluid	Maximum
Dashboard warning light	No warning lights
OBD Scan results	



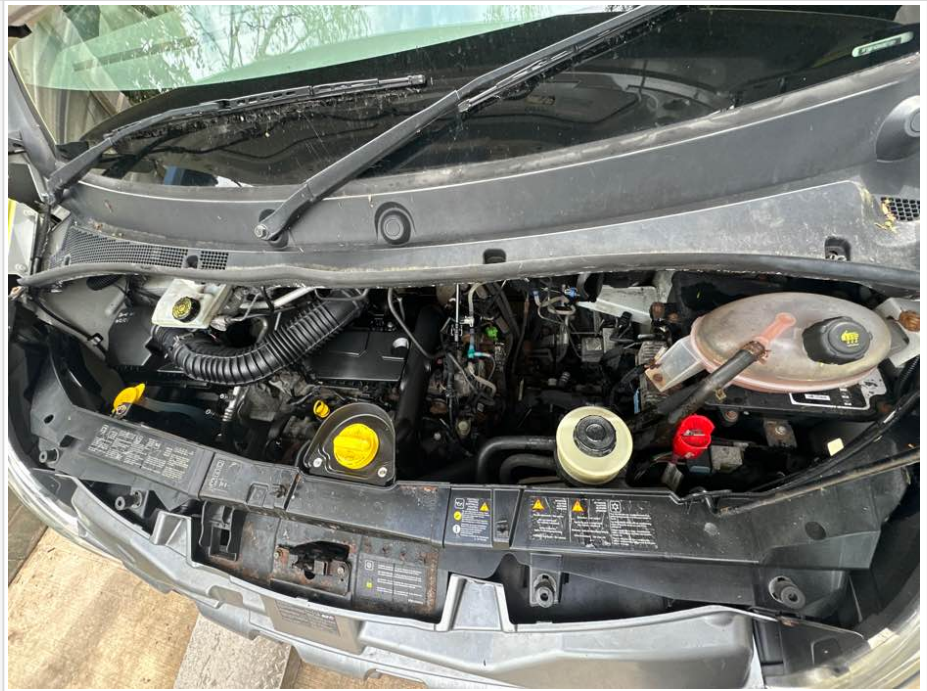
Basevan.com General Inspection

Engine bay photo





Basevan.com General Inspection



Comment