




## Basevan.com General Inspection

### Inspection details

Name of inspector	Wallis
Date of inspection	28/01/2025
Signature	

### Vehicle details

Vehicle registration	DX59DFL
Vehicle chassis no.	SEYL6RXE20N218408
Miles (if in km, multiply by 0.62)	69,884
Make	LDV
Model	Maxus
Transmission	Manual, 5 speed
Factory immobiliser installed	Yes
Speed limiter installed	N/A
Drive configuration	RWD
Gross Vehicle Weight (kg)	3900
Towing capacity	1,600
Tow bar installed	Yes

### Off side front

Age (month/year) Manufactured	08/16
Make, brand.	Budget
Tyre size	205/75/R16
Pressure 1	58
Pressure 2	
Wearing / Perishing (inner)	Medium
Wearing / Perishing (outer)	Medium
tread depth (mm)	5
General comments	



## Basevan.com General Inspection

Images of tyre





## Basevan.com General Inspection



### Near side front

Age (month/year) Manufactured	08/16
Make, brand.	Budget
Tyre size	205/75/R16
Pressure 1	55
Pressure 2	
Wearing / Perishing (inner)	Medium
Wearing / Perishing (outer)	Medium
tread depth (mm)	5
General comments	





## Basevan.com General Inspection

Images of tyre





## Basevan.com General Inspection



### near side rear

Age (month/year) Manufactured	31/18
Make, brand.	Budget
Tyre size	205/75/R16
Pressure 1	56
Pressure 2	
Wearing / Perishing (inner)	Slight
Wearing / Perishing (outer)	Slight
tread depth (mm)	7
General comments	



## Basevan.com General Inspection

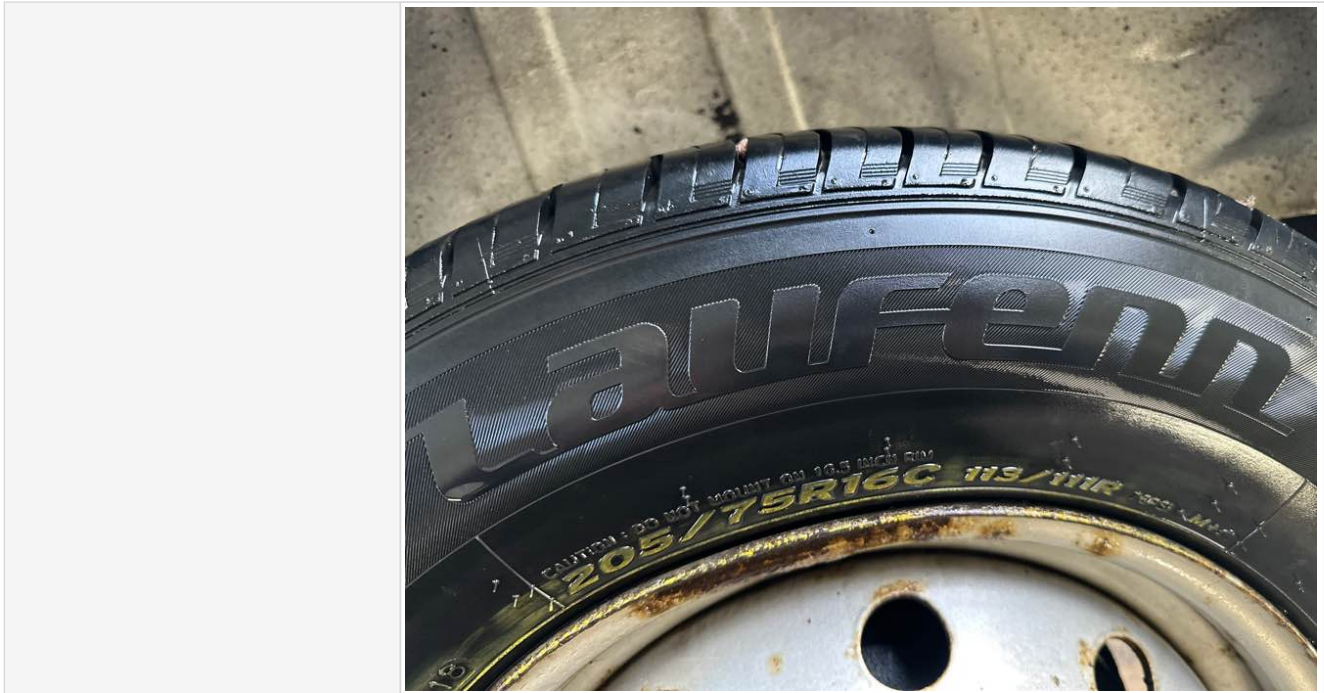
Images of tyre







## Basevan.com General Inspection



### Off side rear

Age (month/year) Manufactured	31/18
Make, brand.	Budget
Tyre size	205/75/R16
Pressure 1	51
Pressure 2	
Wearing / Perishing (inner)	Slight
Wearing / Perishing (outer)	Slight
tread depth (mm)	7
General comments	



## Basevan.com General Inspection

Images of tyre







## Basevan.com General Inspection



### off side Inner (for twin wheel vans)

Is the vehicle a twin wheel axle? (if no don't fill out)	No
Age (month/year) Manufactured	
Make, brand.	
Tyre size	
Pressure 1	
Pressure 2	
Wearing / Perishing (inner)	
Wearing / Perishing (outer)	
tread depth (mm)	
General comments	
Images of tyre	

### near side Inner (for twin wheel vans)


Is the vehicle a twin wheel axle? (if no don't fill out)	No
Age (month/year) Manufactured	
Make, brand.	
Tyre size	
Pressure 1	
Pressure 2	



Basevan.com General Inspection

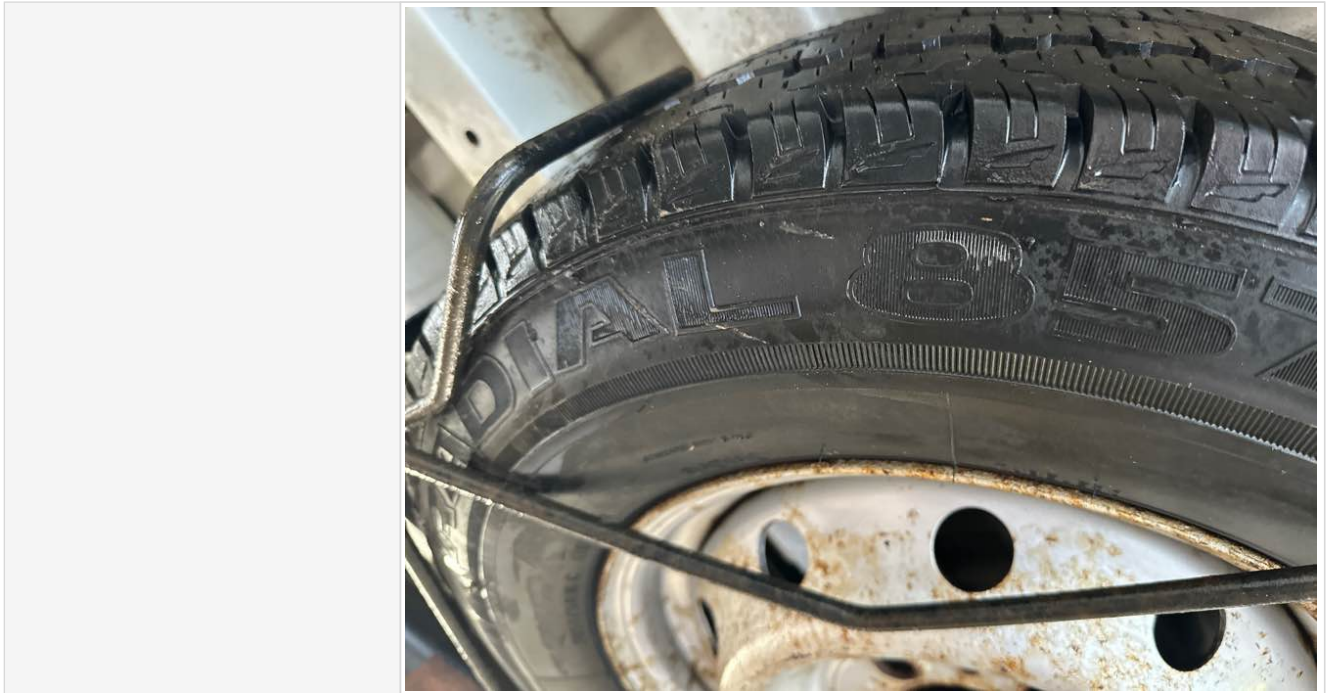
Wearing / Perishing (inner)	
Wearing / Perishing (outer)	
tread depth (mm)	
General comments	
Images of tyre	

Spare wheel

Spare installed? (If no, don't fill out)	Yes
Age (month/year) Manufactured	17/09
Make, brand.	Budget
Tyre size	205/75/R16
Pressure 1	30
Pressure 2	
Wearing / Perishing (inner)	none
Wearing / Perishing (outer)	None
tread depth (mm)	8
General comments	
Images of tyre	



## Basevan.com General Inspection



### Vehicle locking

Factory central locking fitted?	Yes
Response from key fob?	Yes
Response from in-cab locking button?	N/A
Do all the doors lock from central locking function?	Some
Select the following doors that lock.	N/S Front, O/S Front, N/S SL, N/S Rear, O/S Rear
Method of locking	Fob
In conclusion can all the doors be locked in some way and thus the vehicle can be left unattended at night safely?	No





## Basevan.com General Inspection

How many keys present at time of inspection?



Comment

Off side sliding door doesn't lock

### In cab checks

Number of seats (cab only)	Driver & 2 passenger
Cab heater check	Works on all settings
Comment on cab heater	
Electric windows present	Yes
Cab windows function check	Driver side function, Passenger side function
Air conditioning present	Yes
Charging socket present (cigarette lighter)	Yes



Basevan.com General Inspection

Function working?	No
Radio / Media system fitted?	Yes
Radio / media system check	Functions
Reverse camera present?	No
Reverse camera functioning?	N/A
Show any damage or missing items	

General mechanical checks

Fuel level	1/2 Full
Oil level	Full
Oil conditon	Service due soon
Start up, chassis battery check	Started without jump pack
Start-up from cold	3 seconds
Exhaust smoke from cold	some white
Output Voltage of Alternator test	14
Chain or Belt driven engine?	Chain
If belt any proof of change?	
Coolant condition	Clean
Coolant level	Overfilled
Anti-freeze temperature check	-15
Washer fluid	Full
Brake fluid	Full
Power steering fluid	Maximum
Dashboard warning light	No warning lights
OBD Scan results	



## Basevan.com General Inspection

Engine bay photo







## Basevan.com General Inspection



Comment