




Basevan.com General Inspection

Inspection details

Name of inspector	Franklyn T Bromfield
Date of inspection	11/04/2025
Signature	

Vehicle details

Vehicle registration	OY63LYF
Vehicle chassis no.	WOLMTF8FKCB042785
Miles (if in km, multiply by 0.62)	56,195
Make	Vauxhall
Model	Movano
Transmission	Manual, 6 speed
Factory immobiliser installed	Yes
Speed limiter installed	No
Drive configuration	RWD
Gross Vehicle Weight (kg)	4500
Towing capacity	3000kg
Tow bar installed	No

Off side front

Age (month/year) Manufactured	40/19
Make, brand.	Good Year
Tyre size	195/75/R16
Pressure 1	
Pressure 2	60
Wearing / Perishing (inner)	none
Wearing / Perishing (outer)	None
tread depth (mm)	7
General comments	very good tyre, top of range



Basevan.com General Inspection

Images of tyre





Basevan.com General Inspection



Near side front

Age (month/year) Manufactured	35/21
Make, brand.	Good Year
Tyre size	195/75/R16
Pressure 1	
Pressure 2	60
Wearing / Perishing (inner)	none
Wearing / Perishing (outer)	None
tread depth (mm)	7
General comments	good tyre, top of range



Basevan.com General Inspection

Images of tyre





Basevan.com General Inspection



near side rear

Age (month/year) Manufactured	28/20 (educated guess)
Make, brand.	Good Year
Tyre size	195/75/R16
Pressure 1	
Pressure 2	60
Wearing / Perishing (inner)	none
Wearing / Perishing (outer)	None
tread depth (mm)	8
General comments	virtually brand new!



Basevan.com General Inspection

Images of tyre





Basevan.com General Inspection



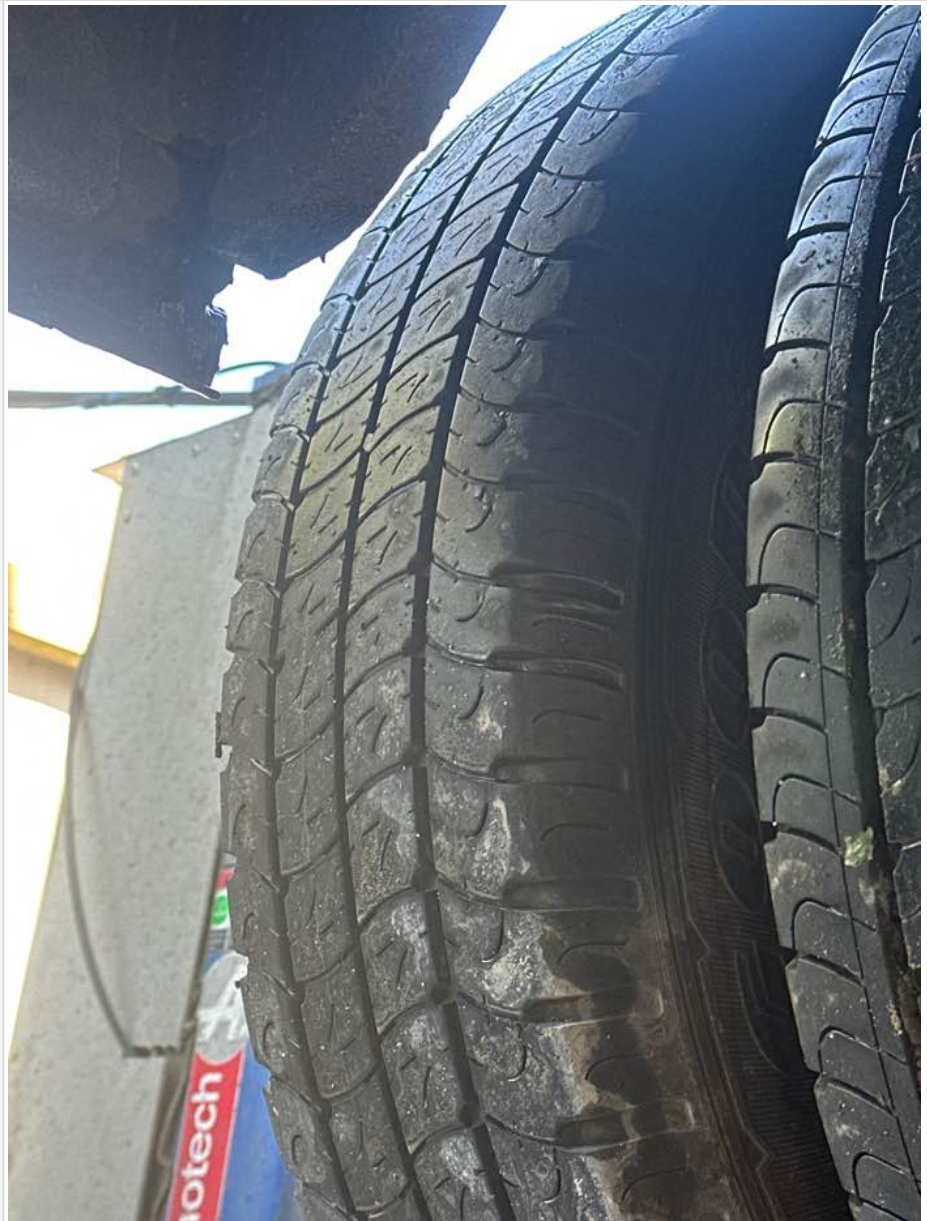
Off side rear

Age (month/year) Manufactured	28/20 (educated guess)
Make, brand.	Michelin
Tyre size	195/75/R16
Pressure 1	
Pressure 2	60
Wearing / Perishing (inner)	none
Wearing / Perishing (outer)	None
tread depth (mm)	7
General comments	mint



Basevan.com General Inspection

Images of tyre





Basevan.com General Inspection




off side Inner (for twin wheel vans)

Is the vehicle a twin wheel axle? (if no don't fill out)	Yes
Age (month/year) Manufactured	28/20
Make, brand.	Good Year
Tyre size	195/75/R16
Pressure 1	
Pressure 2	60
Wearing / Perishing (inner)	none
Wearing / Perishing (outer)	None



Basevan.com General Inspection

tread depth (mm)	7
General comments	good good tyre
Images of tyre	



Basevan.com General Inspection




near side Inner (for twin wheel vans)

Is the vehicle a twin wheel axle? (if no don't fill out)	Yes
Age (month/year) Manufactured	28/20
Make, brand.	Good Year
Tyre size	195/75/R16
Pressure 1	
Pressure 2	60
Wearing / Perishing (inner)	none
Wearing / Perishing (outer)	None



Basevan.com General Inspection

tread depth (mm)	7
General comments	good tyre
Images of tyre	

Spare wheel

Spare installed? (If no, don't fill out)	No
Age (month/year) Manufactured	
Make, brand.	
Tyre size	
Pressure 1	
Pressure 2	



Basevan.com General Inspection

Wearing / Perishing (inner)	
Wearing / Perishing (outer)	
tread depth (mm)	
General comments	
Images of tyre	

Vehicle locking

Factory central locking fitted?	Yes
Response from key fob?	Yes
Response from in-cab locking button?	Yes
Do all the doors lock from central locking function?	All
Select the following doors that lock.	O/S Front, N/S Front, N/S SL, N/S Rear, O/S Rear
Method of locking	Fob
In conclusion can all the doors be locked in some way and thus the vehicle can be left unattended at night safely?	Yes



Basevan.com General Inspection

How many keys present at time of inspection?



Comment


functions as should, 1key

In cab checks

Number of seats (cab only)	Driver only
Cab heater check	Works on all settings
Comment on cab heater	1,2,3,4, and positions all correct
Electric windows present	Yes
Cab windows function check	Driver side function, Passenger side function
Air conditioning present	Yes
Charging socket present (cigarette lighter)	Yes



Basevan.com General Inspection

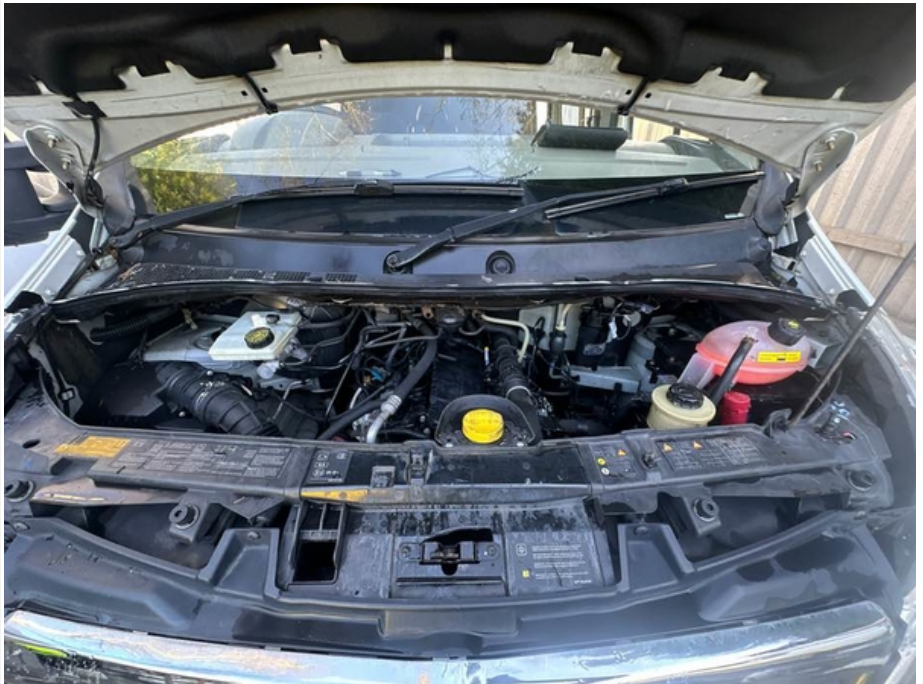
Function working?	Yes
Radio / Media system fitted?	Yes
Radio / media system check	Functions
Reverse camera present?	No
Reverse camera functioning?	N/A
Show any damage or missing items	

General mechanical checks

Fuel level	3/4 Full
Oil level	Full
Oil conditon	Serviced by Basevan
Start up, chassis battery check	Started without jump pack

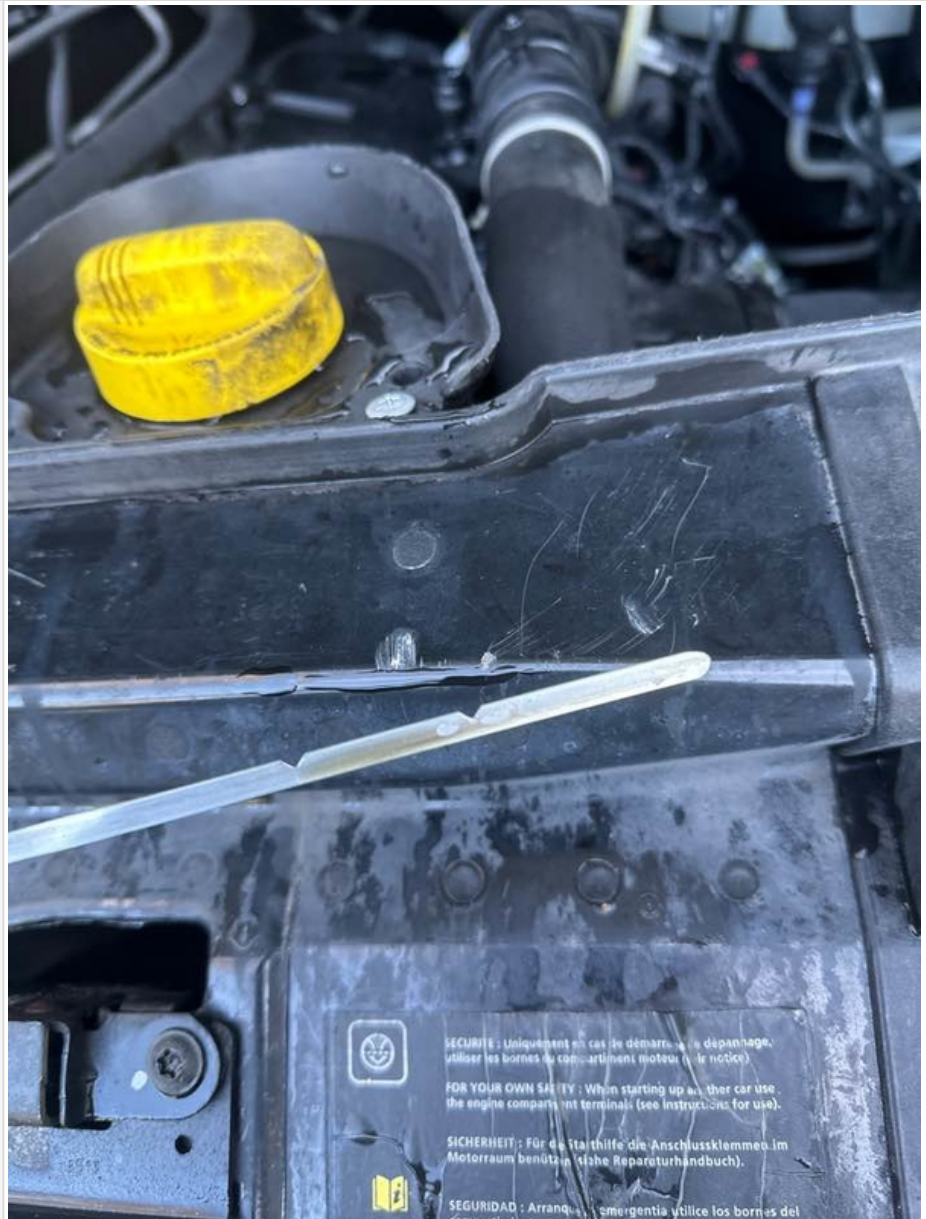


Basevan.com General Inspection

Start-up from cold	Instant
Exhaust smoke from cold	Normal
Output Voltage of Alternator test	13.6
Chain or Belt driven engine?	Chain
If belt any proof of change?	n/a
Coolant condition	Clean
Coolant level	Full
Anti-freeze temperature check	-15
Washer fluid	Full
Brake fluid	Full
Power steering fluid	Maximum
Dashboard warning light	No warning lights
OBD Scan results	
Engine bay photo	



Basevan.com General Inspection



Comment

Mint, honest vehicle, just serviced