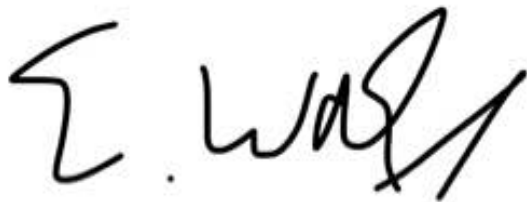


Basevan.com Inspection Report 2025

Inspection details


Name of inspector	Wallis
Date of inspection	16/05/2025
Signature	

Vehicle details

Vehicle registration	FJ16MUA
Vehicle chassis no.	WDB9066572P204596
Miles (if in km, multiply by 0.62)	21243
Make	Mercedes
Model	Sprinter
Transmission	Automatic, 6 speed
Factory immobiliser installed	Yes
Speed limiter installed	Yes
Drive configuration	RWD
Gross Vehicle Weight (kg)	5000
Towing capacity	2000
Tow bar installed	No

Basevan.com Inspection Report 2025

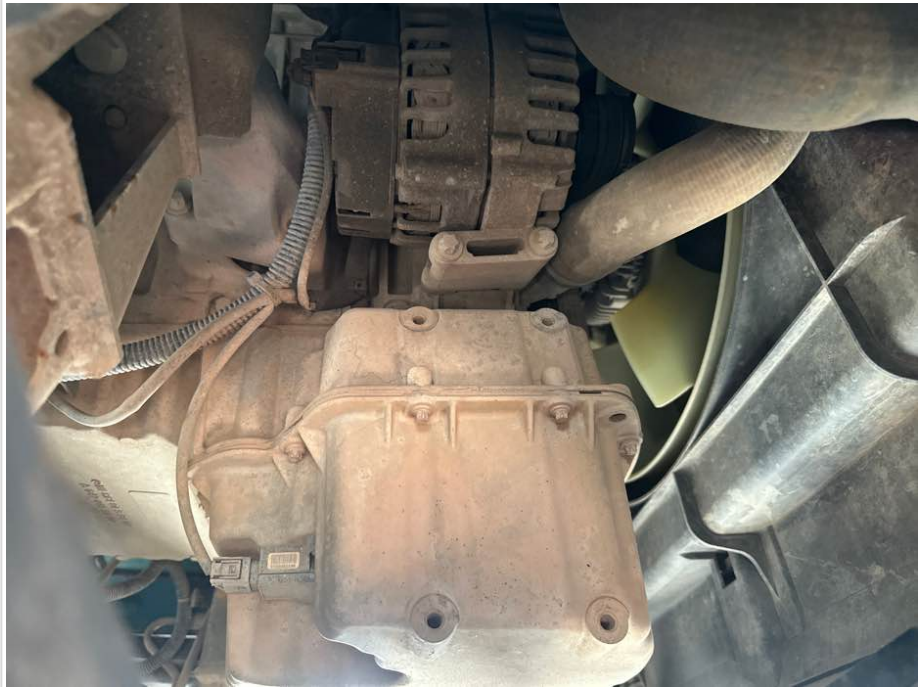
Weight plate



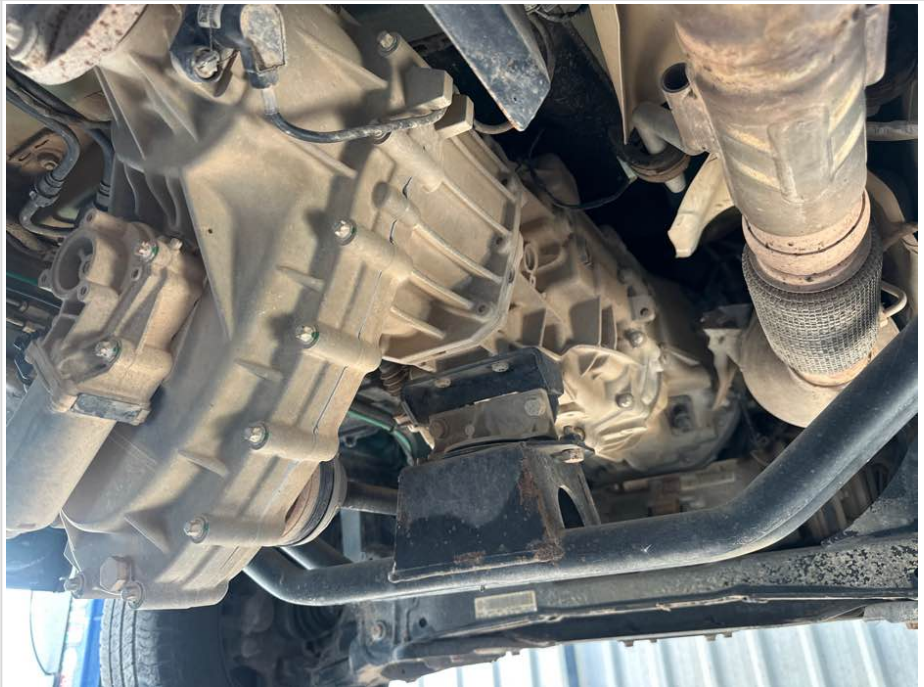
Section 13

Basevan.com Inspection Report 2025



Engine / Sump area



Gearbox




Basevan.com Inspection Report 2025

Rear axle	
General areas	

Off side front

Age (month/year) Manufactured	20/17
Make, brand.	Budget
Tyre size	205/75/R16
Pressure 1	67
Pressure 2	
Wearing / Perishing (inner)	Medium

Basevan.com Inspection Report 2025

Wearing / Perishing (outer)	Medium
tread depth (mm)	5
General comments	
Images of tyre	

Near side front

Age (month/year) Manufactured	37/22
Make, brand.	Good Year
Tyre size	205/75/R16
Pressure 1	65
Pressure 2	
Wearing / Perishing (inner)	Medium

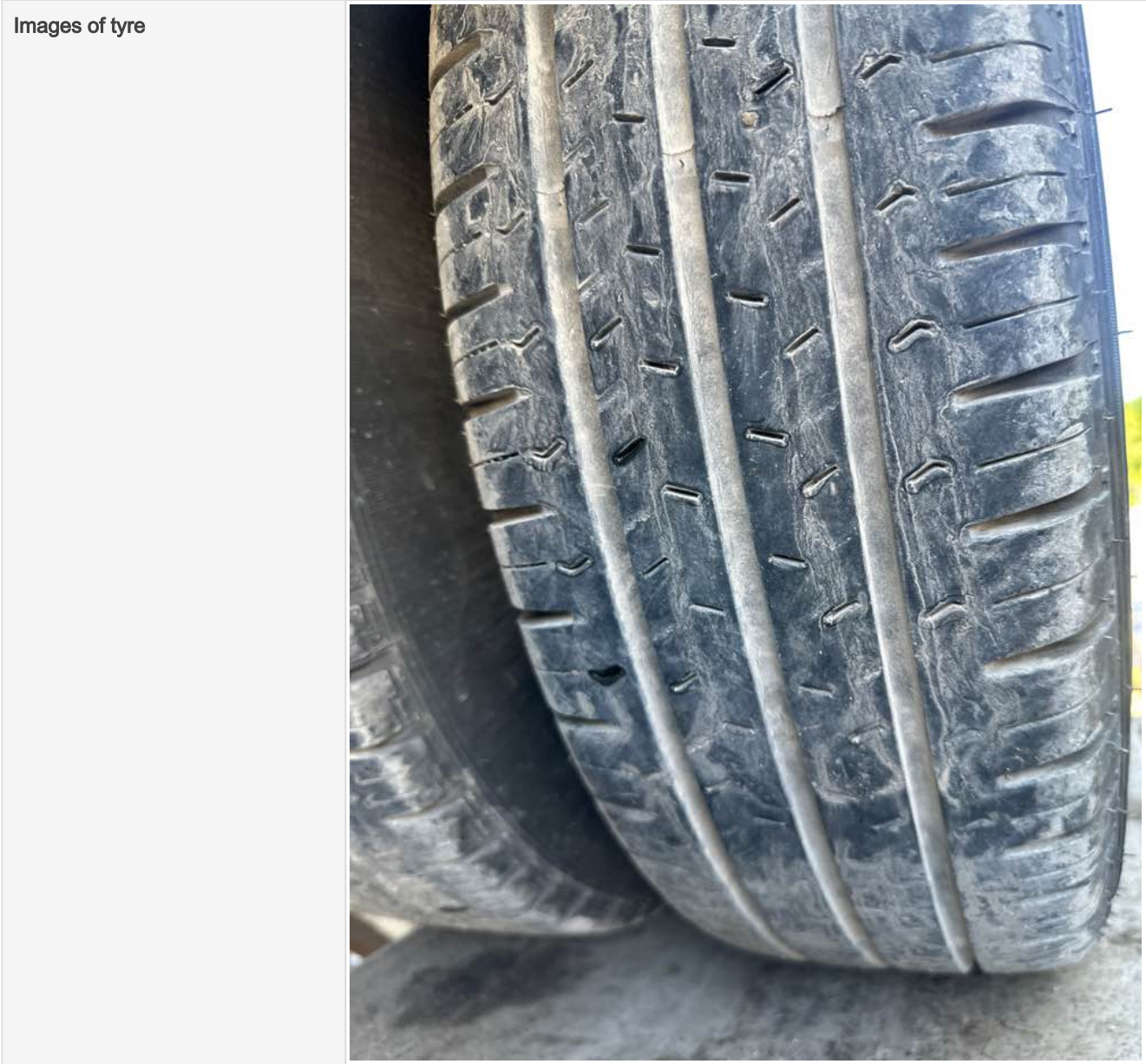
Basevan.com Inspection Report 2025

Wearing / Perishing (outer)	Medium
tread depth (mm)	6
General comments	
Images of tyre	

near side rear

Age (month/year) Manufactured	N/A
Make, brand.	Budget
Tyre size	205/75/R16
Pressure 1	64
Pressure 2	
Wearing / Perishing (inner)	Medium
Wearing / Perishing (outer)	Medium
tread depth (mm)	4
General comments	

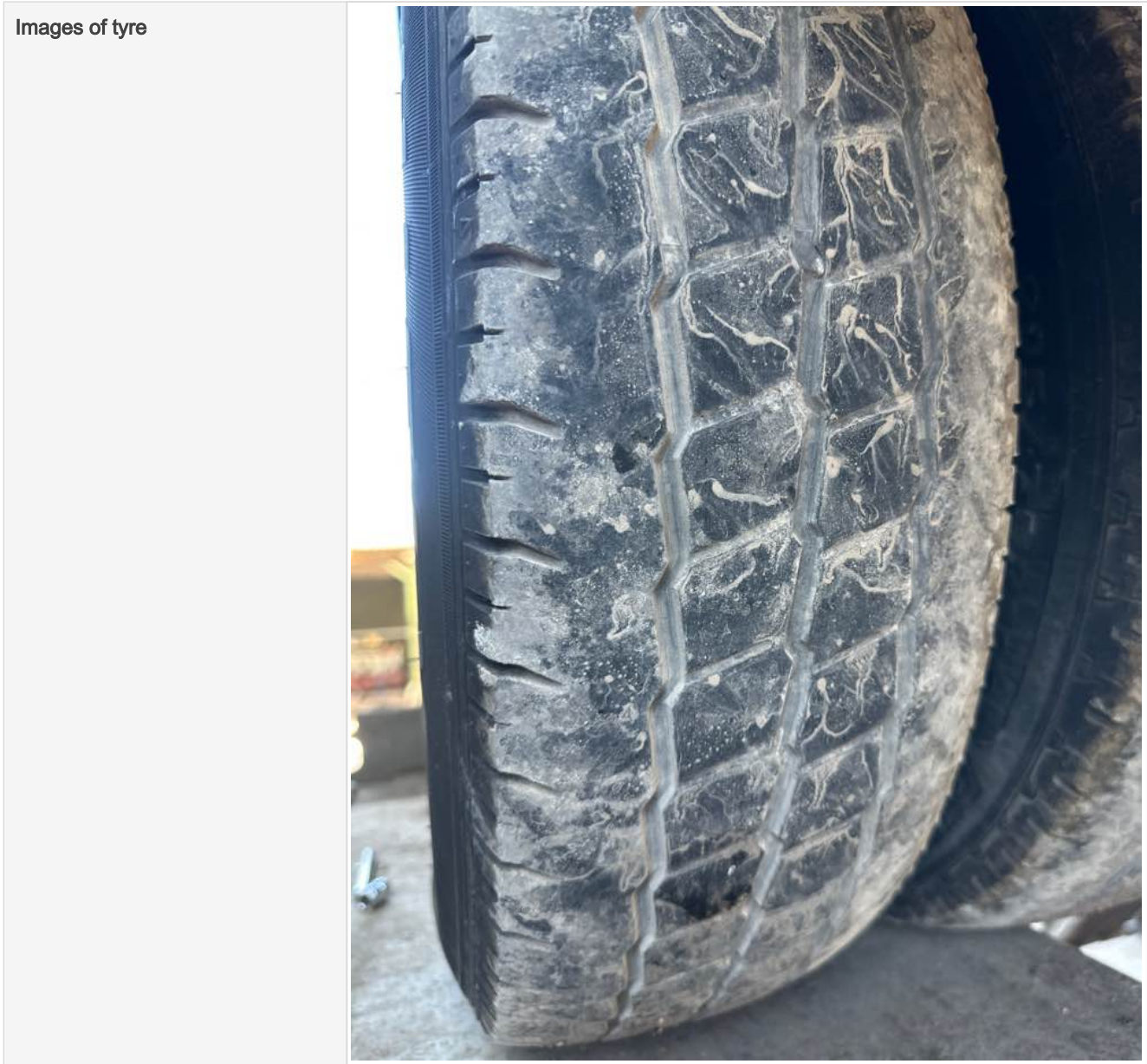
Basevan.com Inspection Report 2025



Off side rear

Age (month/year) Manufactured	N/A
Make, brand.	Budget
Tyre size	205/75/R16
Pressure 1	63
Pressure 2	
Wearing / Perishing (inner)	Medium
Wearing / Perishing (outer)	Medium
tread depth (mm)	4
General comments	


Basevan.com Inspection Report 2025



off side Inner (for twin wheel vans)

Is the vehicle a twin wheel axle? (if no don't fill out)	Yes
Age (month/year) Manufactured	N/A
Make, brand.	Budget
Tyre size	205/75/R16
Pressure 1	63
Pressure 2	
Wearing / Perishing (inner)	Medium
Wearing / Perishing (outer)	Medium


Basevan.com Inspection Report 2025

tread depth (mm)	5
General comments	
Images of tyre	

near side Inner (for twin wheel vans)

Is the vehicle a twin wheel axle? (if no don't fill out)	Yes
Age (month/year) Manufactured	N/A
Make, brand.	Budget
Tyre size	205/75/R16
Pressure 1	64
Pressure 2	


Basevan.com Inspection Report 2025

Wearing / Perishing (inner)	Medium
Wearing / Perishing (outer)	Medium
tread depth (mm)	4
General comments	
Images of tyre	

Spare wheel

Spare installed? (If no, don't fill out)	Yes
Age (month/year) Manufactured	46/19
Make, brand.	Budget
Tyre size	205/75/R16


Basevan.com Inspection Report 2025

Pressure 1	60
Pressure 2	
Wearing / Perishing (inner)	Medium
Wearing / Perishing (outer)	Medium
tread depth (mm)	5
General comments	
Images of tyre	

Vehicle locking

Factory central locking fitted?	Yes
Response from key fob?	Yes
Response from in-cab locking button?	Yes
Do all the doors lock from central locking function?	All
Select the following doors that lock.	N/S Front, O/S Front, N/S SL, O/S SL, O/S Rear, N/S Rear
Method of locking	Fob
In conclusion can all the doors be locked in some way and thus the vehicle can be left unattended at night safely?	Yes

Basevan.com Inspection Report 2025

How many keys present at time of inspection?	
Comment	

In cab checks

Number of seats (cab only)	Driver & 2 passenger
Cab heater check	Works on all settings
Comment on cab heater	
Electric windows present	Yes
Cab windows function check	Driver side function, Passenger side function
Air conditioning present	Yes
Charging socket present (cigarette lighter)	Yes


Basevan.com Inspection Report 2025

Function working?	N/A
Radio / Media system fitted?	Yes
Radio / media system check	Functions
Reverse camera present?	No
Reverse camera functioning?	N/A
Show any damage or missing items	

General mechanical checks

Fuel level	1/2 Full
Oil level	Medium
Oil conditon	Clean
Start up, chassis battery check	Started without jump pack
Start-up from cold	2 seconds
Exhaust smoke from cold	Normal
Output Voltage of Alternator test	14.1
Chain or Belt driven engine?	Chain
If belt any proof of change?	
Coolant condition	Clean
Coolant level	Medium
Anti-freeze temperature check	-31
Washer fluid	Full
Brake fluid	Full
Power steering fluid	Maximum
Dashboard warning light	No warning lights
OBD Scan results	

Basevan.com Inspection Report 2025

Engine bay photo	
Comment	